



Climate Change Projections

Key findings from the Climate Change and Health Vulnerability Assessment for Waterloo Region, Wellington County, Dufferin County, and the City of Guelph



Climate change is a global issue with local impacts. Local weather is expected to get **warmer, wetter, and more extreme.**

Rising temperatures



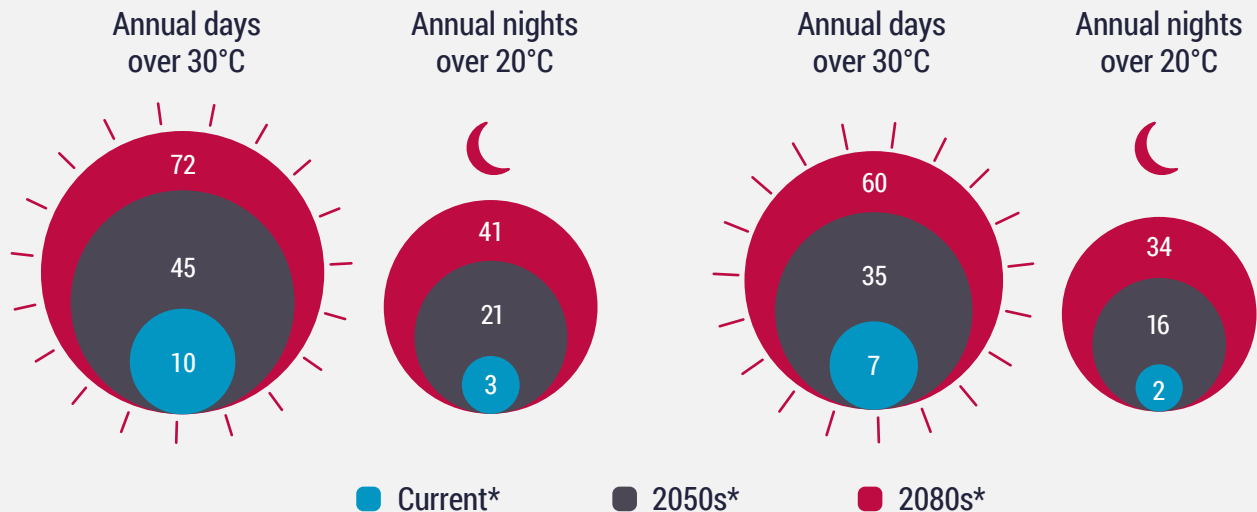
More extreme heat and extended heat waves

Temperatures are projected to increase

+5°C by the 2080s

Waterloo Region

Wellington-Dufferin-Guelph



Annual days below -15°C



* Projections are based on emissions scenario RCP8.5

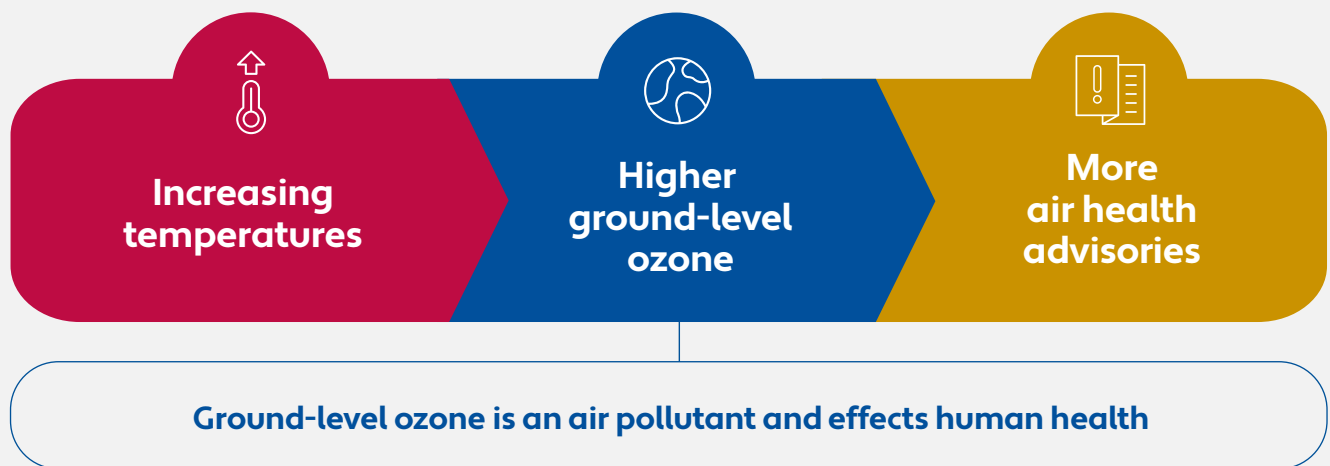
* Baseline and projection periods: current baseline 1990s (1981-2010), 2050s (2041-2070), 2080s (2071-2100)

More extreme precipitation

Precipitation events will increase in frequency, duration, and intensity.



Reduced air quality



Local adaptation planning is needed to build resilience for those most vulnerable.

* Projections are based on emissions scenario RCP8.5

To view the full report or to request an alternate format of this document, please contact:



519-575-4400 or TTY: 519-575-4608
www.regionofwaterloo.ca



519-822-2715
www.wdpublichealth.ca

With support from
Avec l'appui de



The views expressed herein do not necessarily represent the views of Health Canada