



Regional Municipality of Waterloo

Planning and Works Committee

Minutes

Tuesday, January 13, 2015

9:05 a.m.

Regional Council Chamber

150 Frederick Street, Kitchener, ON

Present were: Chair T. Galloway, L. Armstrong, D. Craig, S. Foxton, D. Jaworsky, H. Jowett, K. Kiefer, G. Lorentz, J. Mitchell, J. Nowak, K. Redman, K. Seiling, S. Shantz, B. Vrbanovic and W. Wettlaufer

Members absent: S. Strickland

Declarations of Pecuniary Interest Under The Municipal Conflict of Interest Act

S. Shantz declared a pecuniary interest with respect to item 2d) on the Closed Agenda because she is a moderator for her church conference MCEC which is a beneficiary of a bequest from an estate involved in the Regional Official Plan appeal.

K. Redman declared a pecuniary interest with respect to Reports TES-WAS-15-02, New Hamburg Wastewater Treatment Plant Expansion – Completion of Environmental Assessment, TES-WAS-15-03, Greenbrook Water Treatment Plant and Mannheim Reservoir Repairs and TES-WAS-15-03, Greenbrook Water Treatment Plant and Mannheim Reservoir Repairs due to an indirect pecuniary interest since her son in-law is employed at OCWA.

Delegations

- a) Jeff Stager, Waterloo Federation of Agriculture appeared before Committee to familiarize the new Council with the Census of Agriculture. J. Stager referred to the graphs and tables in the [2011 Census of Agriculture](#). He also provided Committee members with The Real Dirt on Farming [booklet](#). He highlighted some programs, including the 6 x 16 Program which is a program that ensures

that by the age of 16, Ontario teenagers are able to plan and prepare six nutritious meals.

The delegation responded to questions regarding recycling of marshmallow wrap, off farming employment and the consolidation of farms.

K. Seiling thanked the Waterloo Federation of Agriculture explaining to the new councillors that the Region and the Federation has a unique but positive working relationship and looks forward to ongoing cooperation and efforts with them.

- b) TES-TRP-15-01, Operational Review of the Westbound Channelized Right-turn Lane at the Intersection of Bridge Street (Regional Road 12) and Queen Street (Regional Road 12), Township of Wilmot

Phil Bauer, Acting Director, Transportation Services introduced and provided background information on the report highlighting that the stop signs were implemented on a 6 month trial period and after numerous surveys the stops signs proved not to deter trucks from using that intersection. He noted that staff is recommending that the stop signs be removed and the yield signs be reinstated.

- i) Terry Yuzwak appeared before Committee representing the staff and students at New Dundee Public School and the community. He thanked Committee members for considering this design and the Region's attempt to solve the truck traffic problem. He noted that the speed currently is 50 km/h highlighting this seems high for a school zone. He talked about the safety of the students and residents also pointing out the new library recently built noting there is no crosswalk to access the library. He suggested the Region put a ban on trucks during certain hours in New Dundee.

A Committee member asked the delegation if he was looking for a reduction in speed on both Queen Street and Bridge Street. The delegation noted that yes he was looking for the speed limit to be 40 km/h on both streets and he also asked that the Region look at restricting truck traffic through New Dundee.

A Committee member asked the delegation if he agreed with staffs' recommendation to reinstate the yields signs. T. Yuzwak noted reinstating the yields signs is the logical option.

L. Armstrong asked the report be deferred until February to allow time for Regional staff to make a presentation to Wilmot Council and allow time for residents to respond.

Moved by L. Armstrong

Seconded by S. Foxton

That the Regional Municipality of Waterloo defer report TES-TRP-15-01, Operational Review of the Westbound Channelized Right-turn Lane at the Intersection of Bridge Street (Regional Road 12) and Queen Street (Regional Road 12), Township of Wilmot until February 24th, 2015 Planning and Works Committee meeting to allow for further discussions with the Township of Wilmot and residents.

Carried

A Committee member noted the report mentions video footage from that intersection and wondered if this video was available to view and suggested that in the future, videos should be available to be shown at Committee.

Committee members discussed in great detail the need for traffic calming measures not only in New Dundee but other villages across the Region. Suggestions were made to increase enforcement, reducing speed and traffic diversion.

Thomas Schmidt, Commissioner, Transportation and Environmental Services highlighted that staff is currently preparing a report to address whether the speed limit in front of schools fronting onto Regional Roads in Wilmot should be changed to 40 km/h and that report will also consider application of the outcomes to any school in the Region fronting a Regional Road.

Committee members asked staff to report back on Region's policy concerning trucks on Regional Roads and the use of traffic calming measures on Regional Roads

Presentations

- a) Planning, Development and Legislative Services Departmental Overview Presentation

Rob Horne, Commissioner, Planning, Development and Legislative and Services provided a powerpoint presentation that outlined the department and some key priorities: Service Excellence; Regional/Area Municipal Collaboration; Economic Competitiveness and Development; and Balancing Growth and Quality of Life. A copy of the [presentation](#) is appended to the original minutes.

A Committee member asked for clarification on Bill 31. Debra Arnold, Regional Solicitor highlighted that plate denial was only allowed on parking tickets and Bill 31 will allow plate denial on other POA offences as well.

- b) Transportation and Environmental Services Departmental Overview Presentation was deferred until a future meeting.

Request to Remove Items from Consent Agenda

No items were removed from the Consent Agenda.

Motion to Approve Items or Receive for Information

Moved by G. Lorentz

Seconded by D. Craig

That the Region of Waterloo accept PDL-CPL-15-01, Monthly Report of Development Activity for October and November 2014, dated January 13, 2015.

Carried

Regular Agenda Resumes**Reports – Transportation and Environmental Services****Design and Construction**

- a) PDL-LEG-15-05, Authorization to Expropriate Lands (2nd Report) for Ottawa Street South (Regional Road 4) Roundabouts at Alpine Road and at Homer Watson Boulevard (Regional Road 28), City of Kitchener

Moved by K. Seiling

Seconded by G. Lorentz

That Council of the Regional Municipality of Waterloo approve the expropriation of lands for the purpose of reconstruction of Ottawa Street South and the implementation of a roundabout at the intersection of Ottawa Street (Regional Road 4) and Alpine Road and a roundabout at the intersection of Ottawa Street (Regional Road 4) and Homer Watson Boulevard (Regional Road 28) in the City of Kitchener in the Region of Waterloo as detailed in Report PDL-LEG-15-005 dated January 13, 2015, described as follows:

Fee Simple Partial Taking:

1. Part of Block L, Registered Plan 1246 being Part 1 on 58R-17818 and Part of Lot 5, Registered Plan 1022 being Part 5 on 58R-17818, City of Kitchener, P.I.N. 22600-0590(LT) (707 Ottawa Street South);
2. Part of Lots 4 and 5, Plan 1022, being Parts 1 and 2 on Reference Plan 58R-18134, City of Kitchener, P.I.N. 22491-0391(LT) (730 Ottawa Street South);

Temporary Construction Easement:

The right and easement, being a temporary easement in gross, for the free and unobstructed right, interest on, over, under and through the following properties for the purpose of construction, grading, and landscaping as required in connection with improvements to Ottawa Street South and for such purposes, the free, unimpeded and

1785139

unobstructed access to the lands at all times by employees, agents, contractors, workers and anyone authorized by it, and vehicles, supplies and equipment at all times and for all purposes and things necessary for or incidental to the exercise and enjoyment of the right and easement:

3. Part of Block L, Registered Plan 1246 being Parts 2 and 4 on 58R-17818, City of Kitchener, P.I.N. 22600-0590(LT) (707 Ottawa Street South);
4. Part of Lots 4 and 5, Plan 1022, being Parts 3 and 4 on Reference Plan 58R-18134, City of Kitchener, P.I.N. 22491-0391(LT) (730 Ottawa Street South);

Hydro Utility Easement:

The right and easement, being an easement in gross, for itself, its successors and assigns and anyone authorized by it, in perpetuity to, at any time enter upon the following properties for purposes of constructing, laying down, installing, inspecting, repairing, altering, enlarging, replacing, correcting, operating, and maintaining hydro installations and infrastructure, both under ground and overhead, including cables, pipes, conduits of all kinds, all necessary poles, supporting wires and braces and other equipment and appurtenances thereto, herein referred to as the utility plant, which may be determined necessary from time to time through, over, upon, along and across the lands, and for all such purposes together with the free, unimpeded and unobstructed access for itself, its successors and assigns, servants, agents, contractors, workers and anyone authorized by it, and vehicles, supplies and equipment at all times and for all purposes and things necessary for or incidental to the exercise and enjoyment of the right and easement:

5. Part of Block L, Registered Plan 1246 being Part 3 on 58R-17818, City of Kitchener, P.I.N. 22600-0590(LT) (707 Ottawa Street South).

And That staff be instructed to register a Plan of Expropriation for the property within three months of the granting of the approval to expropriate the property, as required by the "Expropriations Act";

And That the registered owners be served with a Notice of Expropriation and a Notice of Possession for the property after the registration of the Plan of Expropriation and the Regional Solicitor is authorized to take any and all actions required to enforce such Notices including but not limited to any application pursuant to Section 40 of the "Expropriations Act";

And That if no agreement as to compensation is made with an owner, the statutory Offer of Compensation and payment be served upon the registered owners of the property in the amount of the market value of the interests in the land as estimated by the Region's appraiser in accordance with the Expropriations Act;

And Further That the Regional Solicitor be authorized to discontinue expropriation proceedings or any part thereof, in respect of the above described lands, or any part thereof, upon the registration on title of the required documentation to complete the transaction or if determined by the Commissioner of Transportation and Environmental Services that such lands, or any part thereof, are not required for the subject Project.

Carried

- b) TES-DCS-15-01, King Street Improvements from Bishop Street to Eagle Street, City of Cambridge – Recommended Design Concept

Moved by K. Kiefer

Seconded by K. Redman

That the Regional Municipality of Waterloo take the following actions with respect to the proposed improvements to King Street from Bishop Street to Eagle Street in the City of Cambridge:

- a) approve the Recommended Design Concept for the proposed improvements as outlined in Report TES-DCS-15-01; and
- b) amend Traffic and Parking By-law 06-072, as amended, upon completion of construction to accommodate the proposed improvements as follows:
 - i. Remove from Schedule 1, No Parking Anytime, on the north side of King Street (Regional Road 8) from Waterloo Street to 23 metres East of Waterloo Street;
 - ii. Remove from Schedule 1, No Parking Anytime, on the south side of King Street (Regional Road 8) from 35.5 metres West of Lowther Street to 47.5 metres West of Lowther Street;
 - iii. Remove from Schedule 1, No Parking Anytime, on the north side of King Street (Regional Road 8) from Lowther Street to 21 metres West of Lowther Street;
 - iv. Remove from Schedule 1, No Parking Anytime, on both sides of King Street (Regional Road 8) from Dolph Street to 23 metres east of Dolph Street; Remove from Schedule 2, Two-hour Limited Parking, on the north side of King Street (Regional Road 8) from Dover Street to Waterloo Street between 8:00 a.m. to 6:00 p.m., Monday to Saturday;
 - v. Remove from Schedule 2, Two-hour Limited Parking, on the south side of King Street (Regional Road 8) from Dover Street to Argyle Street between 8:00 a.m. to 6:00 p.m., Monday to Saturday;

- vi. Remove from Schedule 2, Two-hour Limited Parking, on the north side of King Street (Regional Road 8) from Argyle Street to 21 metres West of Lowther Street between 8:00 a.m. to 6:00 p.m., Monday to Saturday;
- vii. Remove from Schedule 2, Two-hour Limited Parking, on the south side of King Street (Regional Road 8) from Argyle Street to Lowther Street between 8:00 a.m. to 6:00 p.m., Monday to Saturday;
- viii. Remove from Schedule 2, Two-hour Limited Parking, on the north side of King Street (Regional Road 8) from Lowther Street to Union Street between 8:00 a.m. to 6:00 p.m., Monday to Saturday;
- ix. Remove from Schedule 2, Two-hour Limited Parking, on the south side of King Street (Regional Road 8) from Lowther Street to Union Street between 8:00 a.m. to 6:00 p.m., Monday to Saturday;
- x. Add to Schedule 1, No Parking Anytime, on the north side of King Street (Regional Road 8) from Waterloo Street to 25 metres East of Waterloo Street;
- xi. Add to Schedule 1, No Parking Anytime, on the north side of King Street (Regional Road 8) from Argyle Street to 25 metres East of Argyle Street;
- xii. Add to Schedule 1, No Parking Anytime, on the north side of King Street (Regional Road 8) from Westminster Street to 25 metres East of Westminster Street;
- xiii. Add to Schedule 1, No Parking Anytime, on the south side of King Street (Regional Road 8) from Lowther Street to 20 metres East of Lowther Street;
- xiv. Add to Schedule 1, No Parking Anytime, on the south side of King Street (Regional Road 8) from Dover Street to 34 metres East of Dover Street;
- xv. Add to Schedule 1, No Parking Anytime, on the south side of King Street (Regional Road 8) from Waterloo Street to 39 metres West of Waterloo Street;
- xvi. Add to Schedule 1, No Parking Anytime, on the north side of King Street (Regional Road 8) from Dolph Street to 38 metres East of Dolph Street;
- xvii. Add to Schedule 1, No Parking Anytime, on the south side of King Street (Regional Road 8) from Dolph Street to 56 metres East of Dolph Street;
- xviii. Add to Schedule 1, No Parking Anytime, on the south side of King Street (Regional Road 8) from Montrose Street to 53 metres West of Montrose Street;

- xix. Add to Schedule 1, No Parking Anytime, on the north side of King Street (Regional Road 8) from Montrose Street to 26 metres East of Montrose Street;
- xx. Add to Schedule 1, No Parking Anytime, on the south side of King Street (Regional Road 8) from Montrose Street to Chestnut Street;
- xxi. Add to Schedule 1, No Parking Anytime, on the south side of King Street (Regional Road 8) from Chestnut Street to Bishop Street;
- xxii. Add to Schedule 1, No Parking Anytime, on the north side of King Street (Regional Road 8) from 28 metres East of Chestnut Street to Bishop Street;
- xxiii. Add to Schedule 2, Two-hour Limited Parking, on the north side of King Street (Regional Road 8) from 10 metres East of Dover Street to 27 metres West of Waterloo Street between 8:00 a.m. to 6:00 p.m., Monday to Saturday;
- xxiv. Add to Schedule 2, Two-hour Limited Parking, on the north side of King Street (Regional Road 8) from 25 metres east of Waterloo Street to 10 metres West of Argyle Street between 8:00 a.m. to 6:00 p.m., Monday to Saturday;
- xxv. Add to Schedule 2, Two-hour Limited Parking, on the south side of King Street (Regional Road 8) from 34 metres East of Dover Street to 39 metres West of Waterloo Street between 8:00 a.m. to 6:00 p.m., Monday to Saturday;
- xxvi. Add to Schedule 2, Two-hour Limited Parking, on the south side of King Street (Regional Road 8) from 17 metres east of Waterloo Street to 17 metres West of Argyle Street between 8:00 a.m. to 6:00 p.m., Monday to Saturday;
- xxvii. Add to Schedule 2, Two-hour Limited Parking, on the north side of King Street (Regional Road 8) from 25 metres East of Argyle Street to 27 metres West of Lowther Street between 8:00 a.m. to 6:00 p.m., Monday to Saturday;
- xxviii. Add to Schedule 2, Two-hour Limited Parking, on the south side of King Street (Regional Road 8) from 8 metres East of Argyle Street to 19 metres West of Lowther Street between 8:00 a.m. to 6:00 p.m., Monday to Saturday;
- xxix. Add to Schedule 2, Two-hour Limited Parking, on the north side of King Street (Regional Road 8) from 15 metres East of Lowther Street to 15 metres West of Union Street between 8:00 a.m. to 6:00 p.m., Monday to Saturday;
- xxx. Add to Schedule 2, Two-hour Limited Parking, on the south side of King Street (Regional Road 8) from 25 metres East of Lowther Street to 33 metres West of Union Street between 8:00 a.m. to 6:00 p.m., Monday to Saturday;

- xxxi. Add to Schedule 24, Reserved Cycling Lanes Anytime, on both sides of King Street (Regional Road 8) between Bishop Street (Regional Road 41) to Eagle Street (Regional Road 39);

Carried

Rapid Transit

- c) TES-RTS-15-02, Consultant Agreement Extension – Region of Waterloo Rapid Transit Project: General Engineering Consultant Services

Moved by K. Seiling

Seconded by L. Armstrong

That the Regional Municipality of Waterloo extend the current consulting agreement with Parsons Brinkerhoff Halsall Incorporated to continue to provide General Engineering Consulting services for one consolidated additional term of 3 years at an upset fee limit of \$11.5 million plus applicable taxes, as described in Report TES-RTS-15-02, dated January 13, 2015.

Carried

Water Services

- d) TES-WAS-15-02, New Hamburg Wastewater Treatment Plant Expansion – Completion of Environmental Assessment

Moved by L. Armstrong

Seconded by J. Nowak

Conflict:
K. Redman

That the Regional Municipality of Waterloo accept the “Environmental Study Report, Class Environmental Assessment (EA) for the New Hamburg Wastewater Treatment Plant Expansion,” summarized in this Report TES-WAS-15-02 dated January 13, 2015;

And that the Regional Municipality of Waterloo publish the Notice of Completion for the EA and provide the Environmental Study Report for public review and comment for a 30-day period, in accordance with the Municipal Engineers Association’s Class Environmental Assessment process.

Carried

- e) TES-WAS-15-03, Greenbrook Water Treatment Plant and Mannheim Reservoir Repairs

A Committee member asked if it is common practice for the Region's insurance to cover costs in situations where it is not the Region's fault. D. Arnold noted that the Region's insurance will cover the cost and then they will contact the Chemical Suppliers Insurance Company for compensation.

Nancy Kodousek, Director, Water Services updated Committee members on the steps that have been taken to help minimize this situation happening again.

Moved by K. Seiling

Conflict:
K. Redman Seconded by S. Foxton

That the Region of Waterloo approve a capital project in the amount of \$800,000 be added to the 2015 Capital Budget to be funded from the Water Reserve Fund to complete the repairs at the Greenbrook Water Treatment Plant;

And that the Region of Waterloo approve a capital project in the amount of \$400,000 be added to the 2015 Capital Budget to be funded from the Water Reserve Fund to complete the repairs at the Mannheim Reservoir.

Carried

- f) TES-WAS-15-04, Summary of Legislated Reports and Inspections Under the Safe Drinking Water Act

Conflict:
K. Redman

Received for information.

Interdepartmental Report

- g) TES-15-01/PDL-15-01, 2015 Planning and Works Project Team Membership
Committee members volunteered for the various project teams.

Moved by L. Armstrong

Seconded by K. Seiling

That the Regional Municipality of Waterloo appoint the following Regional Councillors to the following project and study teams:

No.	Description	Area Municipality	Suggested Council Representative
1	Victoria Transit Hub Steering Committee	Region	T. Galloway G. Lorentz S. Strickland B. Vrbanovic
3.	Electronic Fare Payment System	Region	K. Redman
7.	Regional Transportation Master Plan	Region	T. Galloway W. Wettlaufer
8.	Airport Master Plan	Region	H. Jowett G. Lorentz S. Strickland S. Shantz
12.	Homer Watson Boulevard Improvements, Doon South Drive to Conestoga College Boulevard Environmental Assessment in 2015 Design in 2015-2017 Construction in 2018	Kitchener	T. Galloway W. Wettlaufer
17.	Swan Street Improvements, Hilltop Drive to Stanley Street and Northumberland Street /Stanley Street, Swan Street to Rail Tracks Design in 2015-2017 Construction in 2018-2019	North Dumfries	S. Foxton
25.	Frederick Street Improvements, Duke Street to Lancaster Street Design in 2016-2019 Construction in 2020	Kitchener	W. Wettlaufer

34.	East Boundary Road Corridor Planning Study Environmental Assessment in 2015-2016	Cambridge North Dumfries	S. Foxton K. Kiefer
45.	Fountain Street Widening, Maple Grove Rd to Kossuth Rd EA and Design 2015-2017 Construction 2018	Cambridge	K. Kiefer
61.	Source Water Protection Liaison Committee		J. Mitchell W. Wettlaufer
63.	William Street and Strange Street Water Supply Upgrades Class EA		J. Mitchell
70.	Biosolids Master Plan Update	Kitchener Waterloo Cambridge	T. Galloway H. Jowett S. Strickland
71.	Wastewater Treatment Master Plan Update	Kitchener Waterloo Cambridge	D. Jaworsky K. Kiefer W. Wettlaufer
72.	East Side Pump Station and Forcemain – Class EA and Pre-design	Cambridge Woolwich	1 Regional Councillor
76.	Kitchener Wastewater Treatment Plant Upgrades Design and Construction ongoing in 2015-2020	Kitchener	G. Lorentz W. Wettlaufer

And that the Regional Municipality of Waterloo forward the requests for area Councillor representatives on project and study teams to the Area Municipalities as described in Appendix A in Report TES-15-01/PDL-15-01, dated January 13, 2015.

Carried

Information/Correspondence

- a) Correspondence from the Township of Woolwich re: Elmira By-pass

Received for information.

T. Schmidt stated that this request will be looked at under the Transportation Master Plan.

A Committee member asked that truck traffic be considered as well as volume.

b) Council Enquiries and Requests for Information Tracking List was received for information.

Other Business

a) D. Craig asked that staff look at the by-pass around Cambridge which is the South Boundary and East Boundary Road and the potential of accelerating that plan.

b) D. Craig mentioned Highway 24 from Cambridge to Guelph noting the volume of traffic is similar to the volume from Guelph to Kitchener. He asked is staff can provide an update on the volume and what plans is there for that section.

c) D. Craig highlighted the traffic problems on Ellis Road getting onto Townline Road and asked staff to provide an update on whether a roundabout or the installation of lights is an option.

Adjourn

Moved by J. Nowak

Seconded by K. Redman

That the meeting adjourn at 10:44 a.m.

Carried

Committee Chair, T. Galloway

Committee Clerk, E. Flewwelling



Region of Waterloo

Planning, Development and Legislative Services Overview

Rob Horne, Commissioner
January 13, 2015

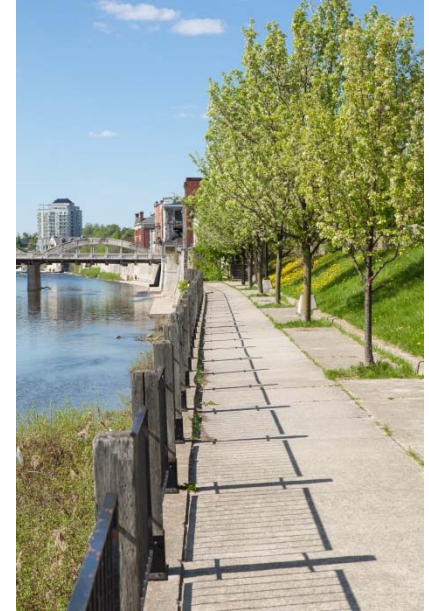


Region of Waterloo

Community Context

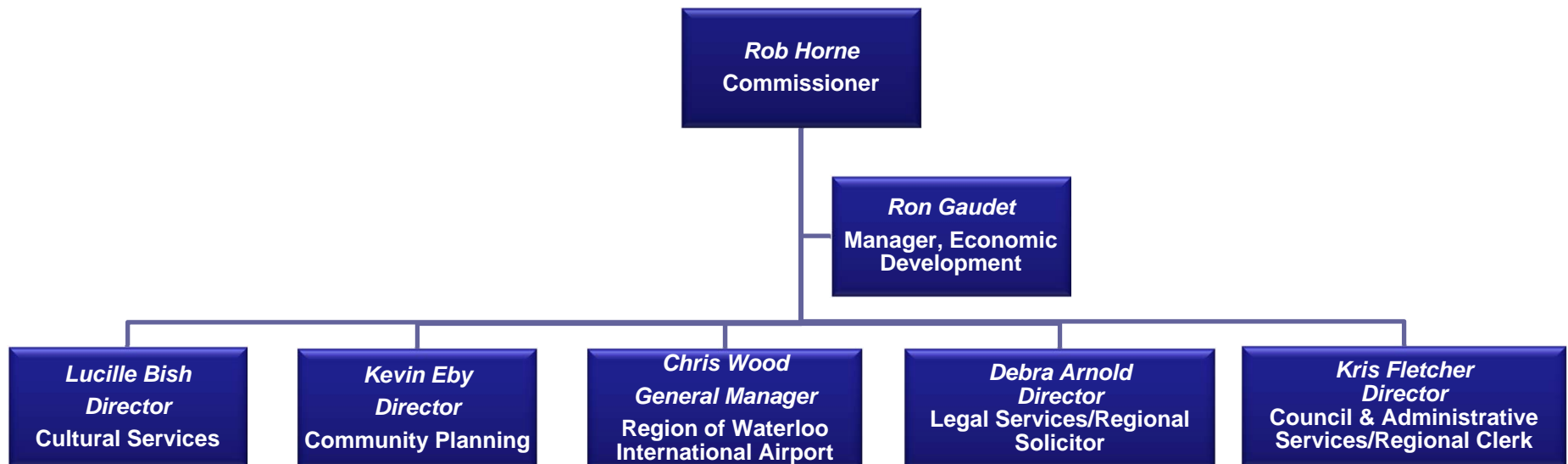
Some Key Priorities:

- Service Excellence
- Regional/Area Municipal Collaboration
- Economic Competitiveness and Development
- Balancing Growth and Quality of Life





Planning, Development and Legislative Services





Cultural Services is responsible for:

- Township Libraries
- Museums
- Cultural Heritage Planning
- Cultural Collaboration





Region of Waterloo

Cultural Services

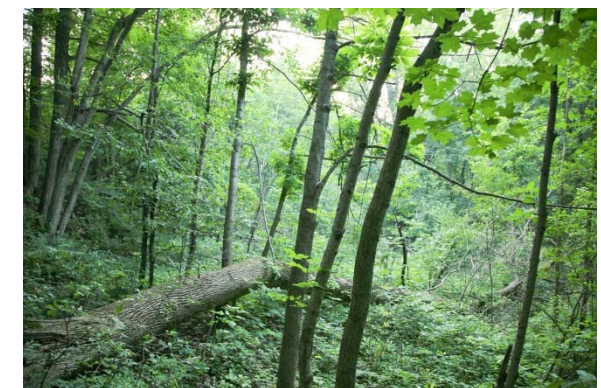
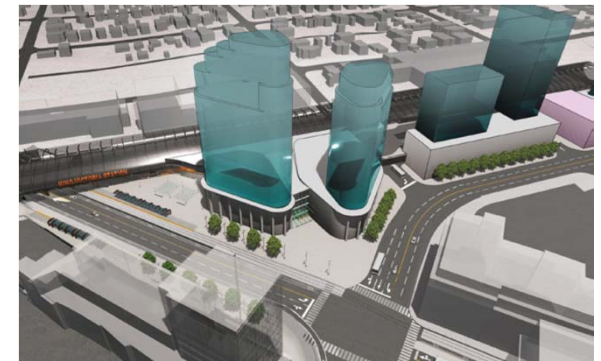
Some Key Focus Areas:

- Meeting increasing rural (township) demand for library services (400,000+ items circulated in 2013)
- Increasing cultural visitor attendance and experiences (100,000+ / year and growing)
- Cultural partnerships/reciprocal marketing
- Culture as identity and economic development catalyst
- Public art (12 already in place)



Community Planning is responsible for:

- "Master Planning" – Regional Official Plan (ROP), Multi-modal Hub
- Reurbanization and Greenfield Planning
- Brownfield Financial Incentives Program (important tool)
- Environmental Planning and Grants
- Regional Forests ($\pm 1,000$ acres)
- Planning, Research and Analytics





Region of Waterloo

Community Planning:

Some Key Focus Areas:

- Final Approval of ROP
- ION Community Building Strategy (over 50% of new development in built-up areas)
- Efficient management of complex development applications in an increasingly complex regulatory environment
- East Side Lands – more available employment land (includes "Quick Start" lands)





New Regional Office of Economic Development

Initial Focus Areas:

- Corporate interests (e.g. airport, ION)
- Supporting new Waterloo Region Economic Development Corporation
- Research and analytics to better promote the regional economy
- Marketing and communications strategies





Region of Waterloo International Airport – Some Key Activities

- Westjet
- American Eagle
- Nolinor
- Hangar Campus
- East Side lands (catalytic/complementary)
- Waterloo-Wellington Flight Centre
- Special Events (e.g. air show)

Over 140,000 (estimated) passengers in 2014 – a record level





Region of Waterloo International Airport

Some Key Focus Areas:

- Securing more carriers (terminal capacity $\pm 250,000$ passengers)
- Bringing new business to our hangar campus (± 25 acres available for new development)
- Ensuring communications with the public are clear and helpful
- Realizing new associated businesses on the nearby East Side employment lands
- Educating the community on the economic importance of the airport



Legal Services is responsible for:

- Full range of corporate counsel and legal services to Council, all departments, Waterloo Regional Police Services Board, and related agencies (e.g. Arts Fund)
- Represent the Region before the courts and administrative tribunals
- Prosecution of Provincial Offences Act and Contravention Act charges
- Real estate services including negotiation and transactions for land acquisitions required for capital projects



Region of Waterloo

Legal Services:

Some Key Focus Areas:

- Increased demand for services
- Increased volume of prosecutions (over 15,000 POA prosecutions in 2013)
- Provincial Regulatory Changes (e.g. economic development, development charges)



Council and Administrative Services is responsible for:

- Administrative support to Regional Council, Committees and related agencies (Arts Fund)
- Graphic design, printing, mail, courier
- Management of paper and electronic records including the corporate archives
- Information access and privacy protection
- Licensing
- Enforcement Services
- Provincial Offences Court administration



Council and Administrative Services:

Some Key Focus Areas:

- Provincial regulatory changes to improve municipal processes to collect fees
- Taxi By-law review
- Support Council initiatives aimed at greater transparency
- Enhance privacy programs





Moving Forward with Regional Council and Our Community

- Ongoing commitment to service excellence
- Actively advise Regional Council and administer on your behalf

This is a time of great change and opportunity. Waterloo Region is very well positioned to build on its global competitiveness!



Region of Waterloo

Thank You!

Questions?

