

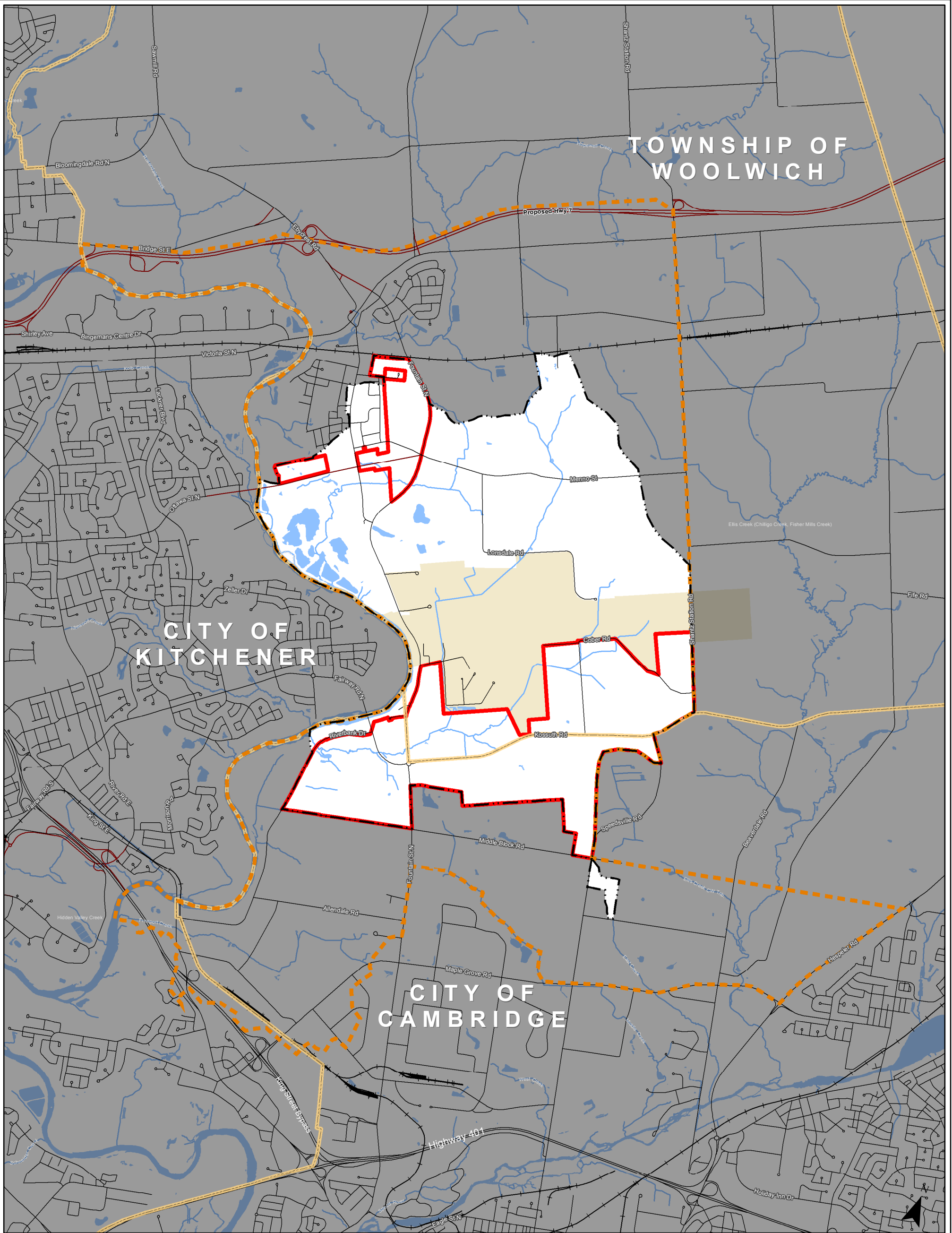
1.0 INTRODUCTION

The East Side Lands generally consist of lands within the Township of Woolwich and the City of Cambridge on the eastern boundary of the City of Kitchener (**Figure 1-1**) and are identified as urban expansion areas within the Region of Waterloo, to be assessed and considered in stages to assist in implementation of development planning (Section 2.0). The Regional Official Plan (ROP 2015) requires that a subwatershed study be completed in advance of designating new areas for development (Policy 7.F) to assess opportunities and constraints to development and assess the potential impact of development on the natural heritage features and functions present within the landscape under current and future land use scenarios.

A Master Environmental Servicing Plan (MESP), including a Subwatershed Study (SWS) was completed for the Stage 1 Lands in November 2013 (Aquafor Beech 2013). The Region of Waterloo, in association with the Grand River Conservation Authority (GRCA), the Township of Woolwich and the City of Cambridge, has initiated a Master Environmental Servicing Plan (MESP) and Secondary Plan Study for the Stage 2 Lands within the East Side Area. The Region has retained MMM Group Limited, a WSP company, to undertake the study. This study follows a similar process to the Stage 1 Lands MESP and Community Plan.

The Randall and Breslau Drains subwatershed study is one of several technical studies required to fulfill the MESP process in providing direction for land use planning and decision making within the Region of Waterloo. A subwatershed study is a comprehensive inventory and assessment of the interactions between groundwater, surface water and natural heritage features (terrestrial and aquatic) and the functions that they collectively perform; it is a systems-based approach. The objective of the subwatershed study is to assess the form and function of the natural heritage features and provide guidance for sound and sustainable land use planning that will maintain significant and supporting features, their ecological functions and processes and the connections and linkages between them that are vital to their long-term viability.

The Randall and Breslau Drains subwatershed study provides a comprehensive overview of existing conditions including significant environmental features, functions and sensitivities, and assesses opportunities for and constraints to development within the context of the applicable objectives and policies of the Province, the Region, the City, the Township and the GRCA. The contents of the subwatershed study provide guidance for sustainable land use planning that protects, and where possible restores or enhances the natural heritage system(s), features and functions present within the subwatershed. Additionally, it provides management strategies and recommendations that will guide future development processes (e.g. buffers, monitoring, etc.).



- Legend**
- Project Study Area
 - Stage 2 Lands
 - East Side Lands
 - Municipal Boundary
 - Existing Roads
 - Future Roads
 - Railway Track
 - Regulated Watercourse
 - Waterbody
 - Airport Lands

FIGURE 1-1
East Side Lands Location

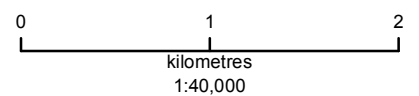


Figure 1
Project No.: 1416006 Date Created: 20 July 2016 Date Modified: 21 December 2016
Coordinate System: NAD 1983 UTM Zone 17N
Source: Region of Waterloo, ©Queen's Printer for Ontario, 2016, Produced using information under License with the GRCA. Copyright © 2016, Grand River Conservation Authority