



# CENSUS BULLETIN

## FAST FACTS

- The term Census in this document refers to the Census of Canada conducted by Statistics Canada every five years. The most recent Census was conducted on May 16, 2006. "The Census is designed to provide information about people and housing units in Canada by their demographic, social and economic characteristics."
- All Canadians are required to complete a Census form. Population and dwelling data presented in this bulletin are based on this 100% sample of the population.
- Students are enumerated in their usual place of residence (which is often in their parent's Census household). The Census population for Waterloo Region does not include post-secondary students who are temporarily residing in Waterloo Region.
- In contrast to the 2006 Census population of 478,121, the Region of Waterloo's population estimate for year end 2006 is 506,800. The Region of Waterloo produces annual population estimates based upon Statistics Canada population counts from the Census, but additionally include: an estimate of full-time post secondary students, accommodation of the census undercount, building activity, vacancy rates, and adjustments from May to year-end.

## Population and Dwelling Counts

### Statistics for Waterloo Region from the 2006 Census

#### Population Counts

The Census population of Waterloo Region on May 16th, 2006 was 478,121 according to data released by Statistics Canada. This is equal to a growth of almost 40,000 people over the five year period since the 2001 Census. In comparison, the increase from 1996 to 2001 was 33,080. The Kitchener *Urban Area*, representing the cities of Cambridge, Kitchener and Waterloo, remains the 10th largest Urban Area in Canada and the 4th largest in Ontario, after Toronto, Ottawa-Gatineau and Hamilton.

#### Population Growth

Since its formation in 1973, Waterloo Region has consistently been ranked as one of the fastest growing communities in Canada. From 2001 to 2006, the Region's population has increased by 9%, representing about 8,000 people per year, compared to an 8.2% increase from 1996 to 2001. The 9% increase made Waterloo Region the sixth fastest growing municipality in Ontario, outpacing both the provincial and national growth rates. The Region's absolute population change surpassed that of Toronto, Ottawa and Hamilton as illustrated in Table 1.

**Table 1: Ontario Population and Growth, 2001-2006**

Name	Population		Absolute Growth	% Growth
	2001	2006		
Toronto	2,481,494	2,503,281	21,787	0.9
Peel	988,958*	1,159,405	170,447	17.2
York	729,254	892,712	163,458	22.4
Ottawa	774,072	812,129	38,057	4.9
Durham	506,901	561,258	54,357	10.7
Hamilton	490,268 <sup>††</sup>	504,559	14,291	2.8
<b>Waterloo</b>	<b>438,515</b>	<b>478,121</b>	<b>39,606</b>	<b>9.0</b>
Halton	375,229	439,256	64,027	17.1
Niagara	410,574	427,421	16,847	4.1
Middlesex <sup>†</sup>	403,185	422,333	19,148	4.7
<i>Ontario</i>	<i>11,410,046</i>	<i>12,160,282</i>	<i>750,236</i>	<i>6.6</i>
<i>Canada</i>	<i>30,007,094</i>	<i>31,612,897</i>	<i>1,605,803</i>	<i>5.4</i>

\* adjusted due to boundary change † incompletely enumerated Indian reserves and Indian settlements

†† revised counts

Source: Statistics Canada, 2001 and 2006 Census by Census Divisions

The population increased for all area municipalities within Waterloo Region from 2001 to 2006, as indicated in Table 2. In terms of absolute numbers, Kitchener experienced the largest increase in population adding 14,269 residents, followed by Waterloo (10,932) and Cambridge (9,999). The population increase in the three cities represents almost 90% of the Region's growth. Growth from 2001 to 2006 showed Wilmot Township having the highest percent increase (15.0%), followed by the cities of Waterloo (12.6%) and Cambridge (9.1%).

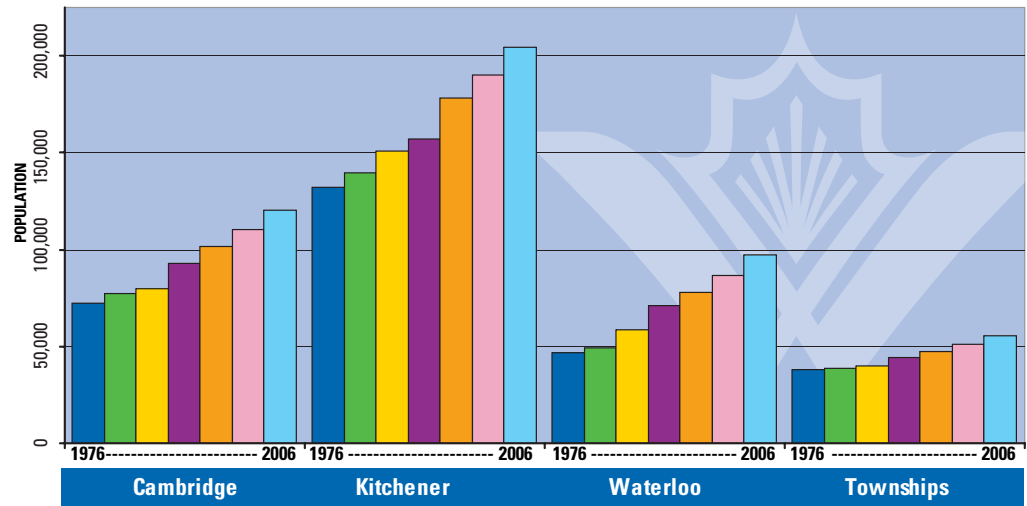
**Table 2: Waterloo Region Population and Growth by Municipality, 2001-2006**

Name	Population		Absolute Growth	% Growth
	2001	2006		
<b>Waterloo Region</b>	<b>438,515</b>	<b>478,121</b>	<b>39,606</b>	<b>9.0%</b>
Cambridge	110,372	120,371	9,999	9.1%
Kitchener	190,399	204,668	14,269	7.5%
Waterloo	86,543	97,475	10,932	12.6%
North Dumfries	8,769	9,063	294	3.4%
Wellesley	9,365	9,789	424	4.5%
Wilmot	14,866	17,097	2,231	15.0%
Woolwich	18,201	19,658	1,457	8.0%

Source: Statistics Canada, 2001 and 2006 Census by Census Subdivision

The thirty-year population growth of Waterloo Region has exceeded 5% in each of the five-year periods between Censuses, demonstrating a consistent increase over time. Figure 1 illustrates the thirty-year population counts for Waterloo Region from 1976 to 2006. The percent growth for each area showed Waterloo at 109%, Cambridge at 66%, Kitchener at 55% and the townships at 45%.

**Figure 1: Waterloo Region Long-Term Population Growth, 1976-2006 (5-year Intervals)**



Source: Statistics Canada, Census 1976-2006

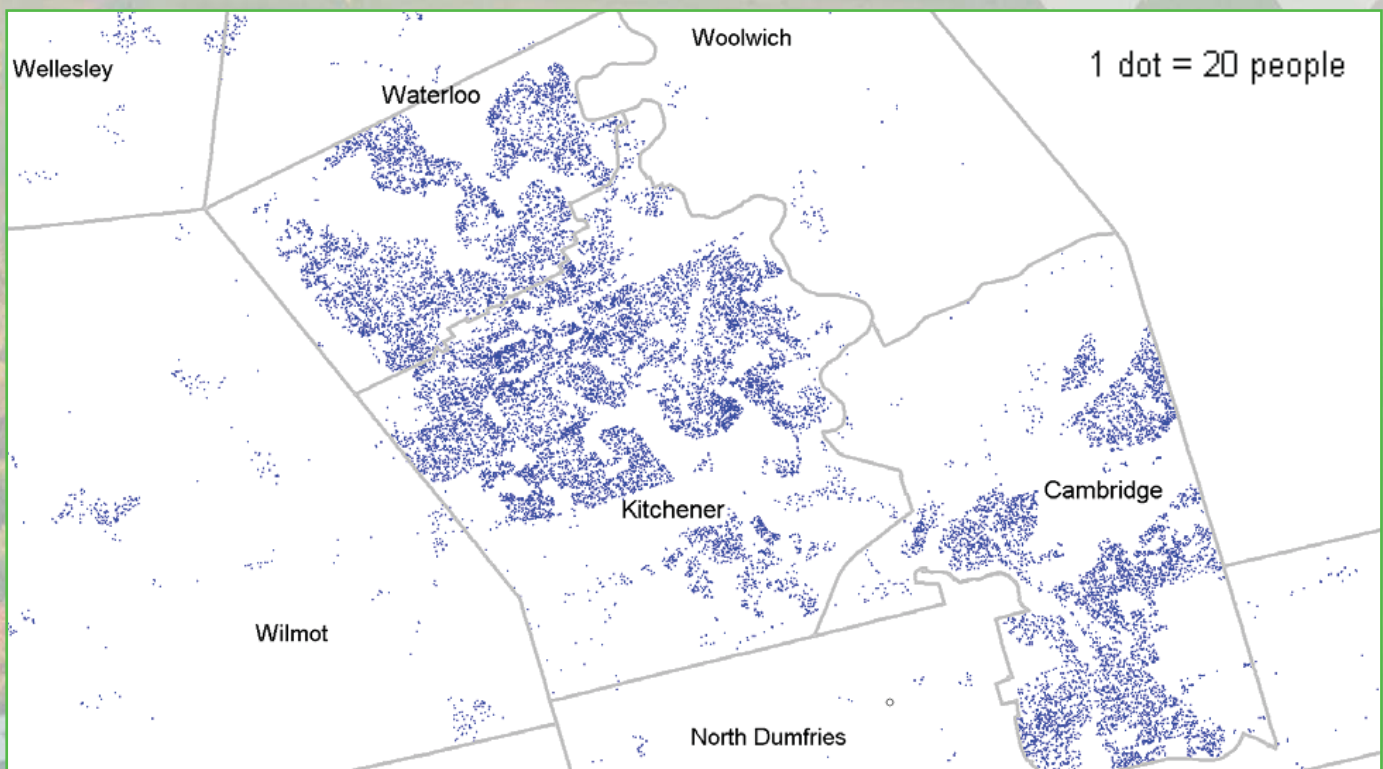




### Population Density

The Census shows that Waterloo Region has an area of 1,369 square kilometers, and the majority of its population resides in the cities of Cambridge, Kitchener and Waterloo. Figure 2 shows the Region's population distribution focusing on the tri-city areas of Cambridge, Kitchener and Waterloo. Each small dot represents 20 people. The higher densities of the residential neighbourhoods can be seen through the more concentrated dots.

**Figure 2: Tri-City Area of Waterloo Region Population Distribution, 2006**



Source: Statistics Canada, 2006 Census and Planning Housing and Community Services Department, 2007

## Dwelling Counts and Growth

The 2006 Census reported 187,088 *total private dwellings* in Waterloo Region, an increase of 12% from 2001. The largest percent increase over the five-year period occurred in the Township of Wilmot (17.3%) and the cities of Waterloo (14.7%), Kitchener (11.6%) and Cambridge (11.3%) as shown in Table 3.

**Table 3: Waterloo Region Total Private Dwellings, 2006**

Name	Total Private Dwellings 2001	Total Private Dwellings 2006	Absolute Growth	% Growth
<b>Waterloo Region</b>	<b>166,813</b>	<b>187,088</b>	<b>20,275</b>	<b>12.2%</b>
Cambridge	40,061	44,589	4,528	11.3%
Kitchener	74,127	82,723	8,596	11.6%
Waterloo	35,437	40,659	5,222	14.7%
North Dumfries	2,898	3,103	205	7.1%
Wellesley	2,710	2,913	203	7.5%
Wilmot	5,368	6,296	928	17.3%
Woolwich	6,212	6,805	593	9.5%

Source: Statistics Canada, 2001 and 2006 Census by Census Division



**Urban Area** – Having “. . . a minimum population concentration of 1,000 persons and a population density of at least 400 persons per square kilometre, based on the current Census population count. All territory outside urban areas is classified as rural”

**Total Private Dwellings** – Describes “a set of living quarters designed for or converted for human habitation in which a person or group of persons reside or could reside. In addition, a private dwelling must have a source of heat or power and must be an enclosed space that provides shelter from the elements, as evidenced by complete and enclosed walls and roof and by doors and windows that provide protection from wind, rain and snow.”

Source: Statistics Canada Census Dictionary, 2006

## FAST FACTS

- Persons per unit (PPU) are usually calculated using “usual residents in regular dwellings.” It would be misleading to calculate persons per unit using the total population and dwelling counts given in this Bulletin. “Occupied dwellings” and “Households” are equivalent and information on them, together with their associated populations is provided in Bulletin #3 and Bulletin #4.

For more information on Census statistics please refer to Statistics Canada’s website: <http://www.statscan.ca/census>



For further information please contact:



**Planning, Housing and Community Services**  
Planning Information and Research

[www.region.waterloo.on.ca](http://www.region.waterloo.on.ca)  
[planninginfo@region.waterloo.on.ca](mailto:planninginfo@region.waterloo.on.ca)

**519-575-4047**