

East Side Lands – Stage 2

Master Environmental Servicing Plan & Secondary Plan

Public Information Centre #1 | June 16, 2016

Today's Agenda

5:30 pm – 6:30 pm: Open House

6:30 pm – 7:00 pm: Presentation

7:00 pm – 8:00 pm: Questions and
Answers / Open House



Outline

- Project Team Introductions
- Purpose of this PIC
- Purpose of the Study
- Study Area
- Timeline and Process
- Key Deliverables
- Opportunities for Input
- Next Steps

Project Team

- Project partners:



Region of Waterloo



- Consulting team:



Region of Waterloo



CANADA
CAMBRIDGE



WOOLWICH
TOWNSHIP



Grand River
Conservation Authority



WSP | MMM GROUP

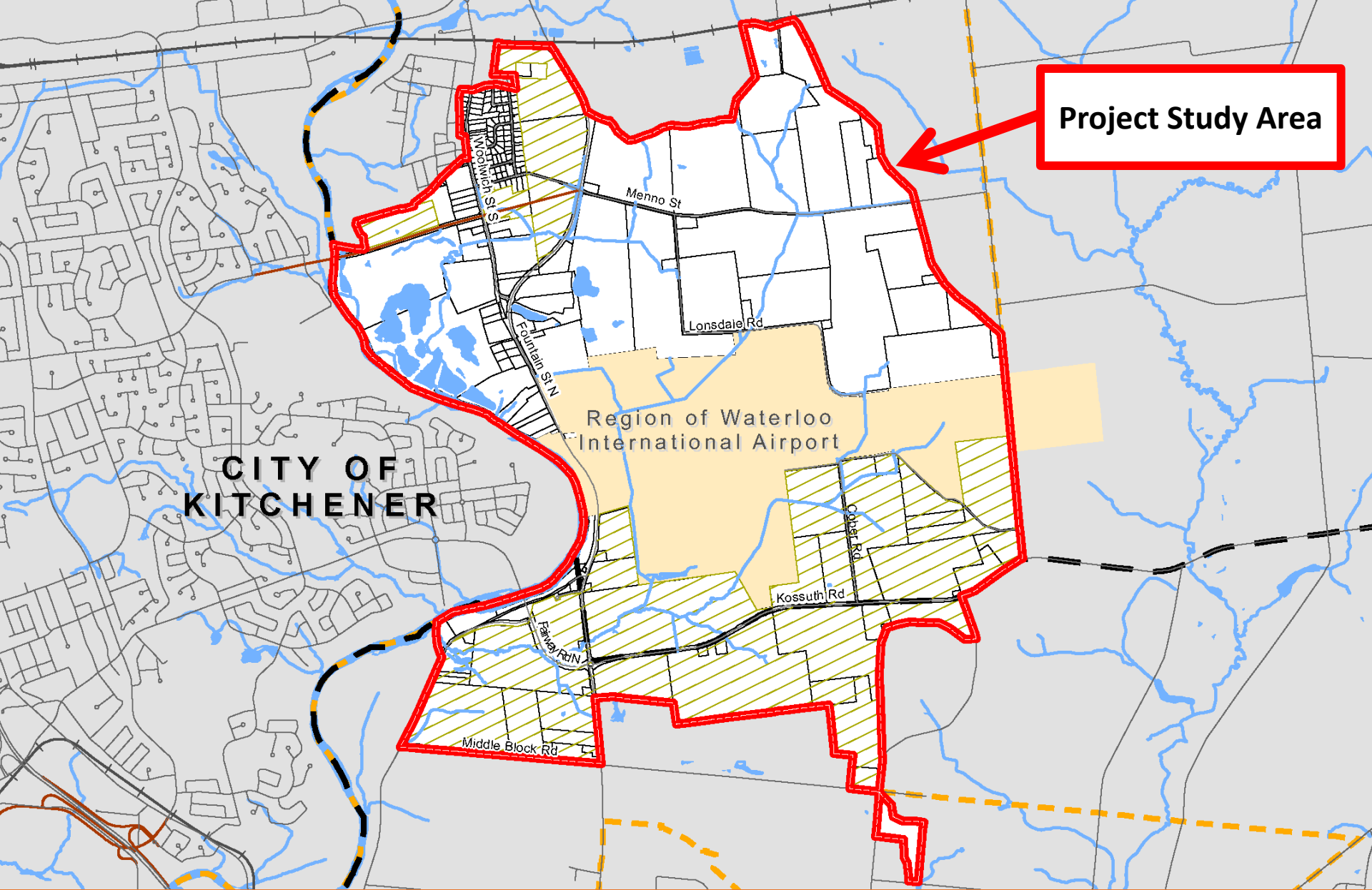
Purpose of this PIC

- Introduce the project
- Present the purpose and background of the study
- Introduce the Background Review & Gaps Analysis Report
- Identify next steps and opportunities for public participation

Purpose of the Study

- Purpose is to establish a framework for development to occur in portions of the Stage 2 Lands of the East Side Lands
- Problem statement:

“How to effectively and efficiently service and develop the Stage 2 Lands in an environmentally sustainable manner.”

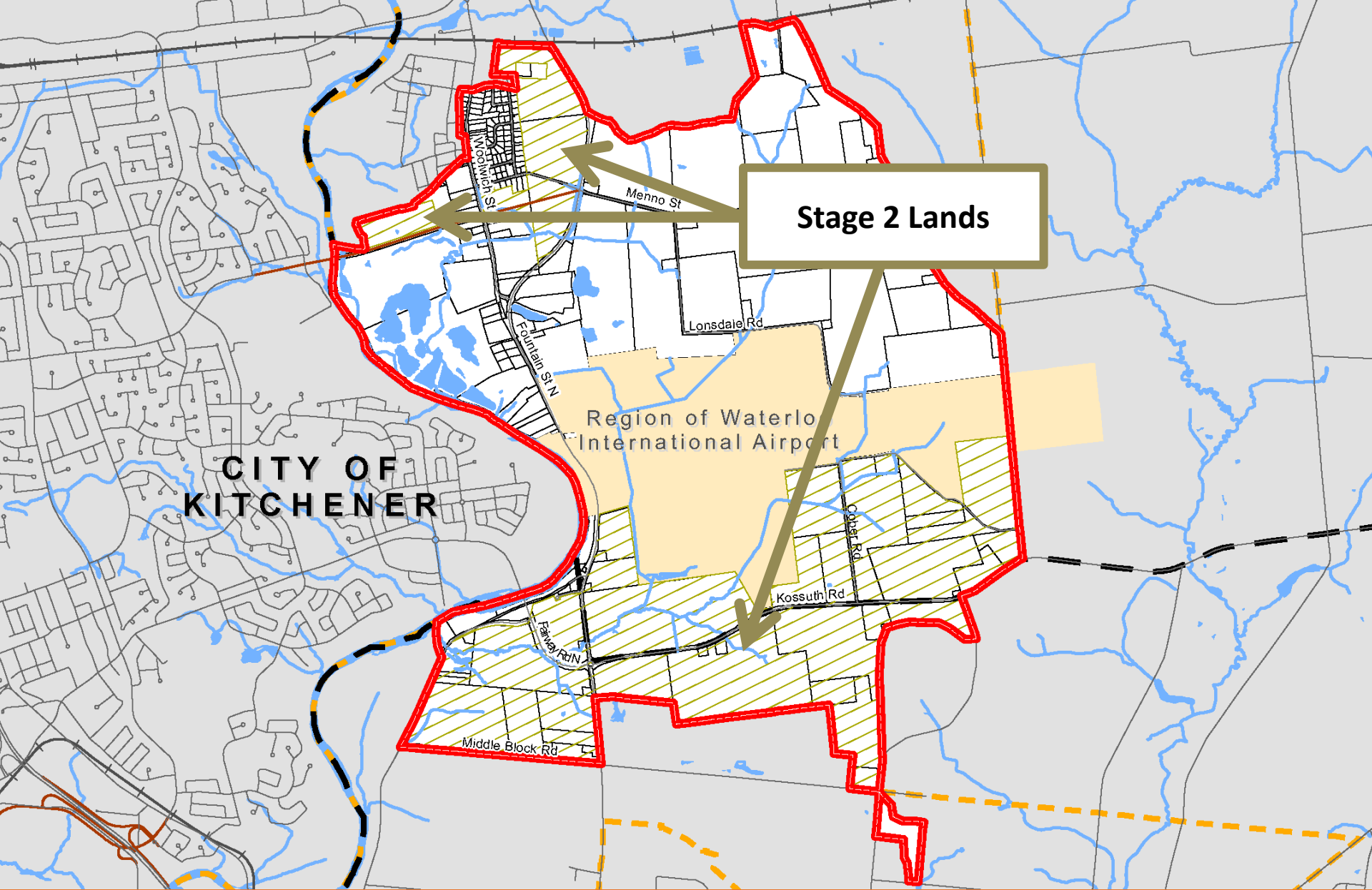


Project Study Area

**CITY OF
KITCHENER**

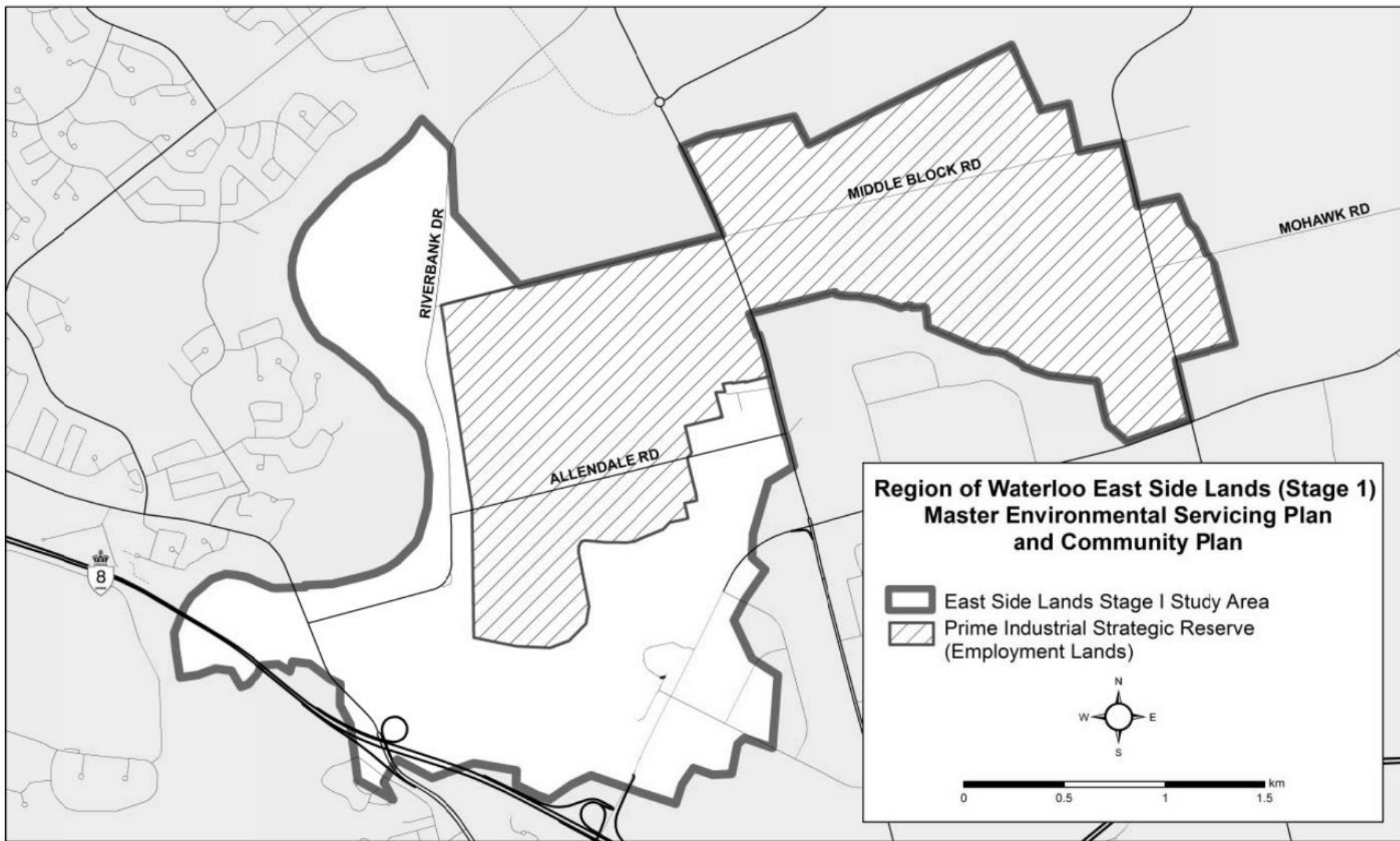
Region of Waterloo
International Airport






Background

- East Side Lands have been subject to many studies over the past 10+ years
 - Regional Growth Management Strategy (2003)
 - East Side Area Scoping Study (2004) and Structure Plan (2006)
- Stage 1 MESP and Community Plan was completed in 2014



Timeline & Process



Key Task	Consultation	Timing
Collect and Review Background Information	PIC #1	June 16, 2016
Document existing conditions and identify alternative solutions (Draft MESP)	PCC #2	Fall 2016
Identify preferred solutions and prepare draft Secondary Plan (Revised MESP)	PCC #3	Winter 2017
Finalize the MESP & Secondary Plan	PCC #4	Spring 2017

Key Deliverables

1. Background Review & Gaps Analysis
2. MESP and Technical Appendices
3. Secondary Plan
4. Implementation & Staging Strategy

1. Draft Background Review & Gaps Analysis Report

- Review of existing information
- Evolves into the first chapter of the MESP
- To be available for public review by the end of June 2016

www.regionofwaterloo.ca/eastside

2. Master Environmental Servicing Plan

- Prepared under the *Environmental Assessment Act* and Municipal Class EA process
- An integrated, multi-disciplinary process to assist in planning for future development within a large area
- Identifies a problem/opportunity statement
- Identification and evaluation of alternatives

2. Master Environmental Servicing Plan (cont'd)

- Technical Appendices:
 - Master Drainage Plan
 - Subwatershed Study
 - Transportation Assessment
 - Water/Wastewater/Utilities Assessment

3. Secondary Plan

- Identifies future land uses, densities within a defined area
- Subject to *Planning Act* and policies of the current Cambridge Official Plan
- The Secondary Plan is only being prepared for the Stage 2 Lands in Cambridge

4. Implementation & Staging Strategy

- Ensure proposed infrastructure solutions are cost effective and fiscally sustainable
- Identify financing mechanisms
- Identify the timing of improvements and development within portions of the Stage 2 Lands

Opportunities for Input

- Three more Public Consultation Centres (PCCs) are planned:
 - Fall 2016
 - Winter 2017
 - Spring 2017
- Consultation is considered on-going
- Visit www.regionofwaterloo.ca/eastside

Next Steps

- Receive comments and finalize the Background Review & Gaps Analysis
- Advancing the development options and technical assessments in summer 2016
- PIC #2 to present existing conditions & alternative solutions is planned in Fall 2016