

YIELD SMART in roundabouts

DID YOU KNOW?

When you approach a roundabout, vehicles, cyclists and pedestrians inside the roundabout always have the right of way. Make sure you know how to yield smart to keep everyone on our roads safe - including you.



When you enter and leave a roundabout,
DO THE EXTRA SEC CHECK:

Slow down as you approach

Wait to enter until all lanes are clear

Yield to pedestrians and cyclists as you enter and exit

IT ONLY TAKES A SECOND



15 seconds
to check a text message



10 seconds
to put on your shoes



5 seconds
to pour your coffee



3 seconds
to give a hug



2 seconds
to breathe in and out



1 second
to look left or right



150 milliseconds
to collide with another vehicle, pedestrian or cyclist

HELP KEEP OUR REGIONAL ROUNDABOUTS FLOWING



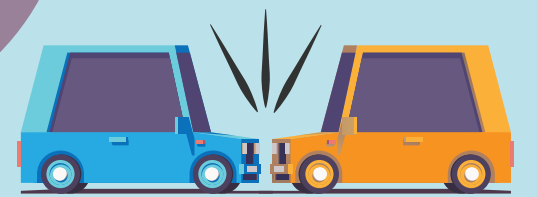
33

roundabouts
on regional roads



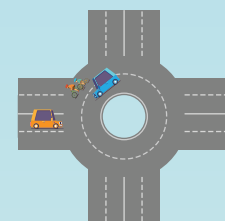
600,000
pedestrians

cross regional roundabouts each year

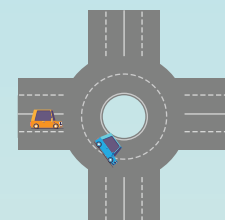


ONE COLLISION IS ONE TOO MANY

FAILING TO YIELD
is the most common cause of collisions in roundabouts



When you enter a roundabout, remember to yield to cyclists, pedestrians and vehicles in **all lanes**



Be aware that traffic may exit the roundabout from any lane, including the **inside lane**



When we Yield Smart in roundabouts, we all win.

ROUNDABOUTS SAVE...



TIME Roundabouts increase the flow of traffic and reduce delays.



MONEY Roundabouts are less expensive to maintain.



FUEL Improved traffic flow means less time spent idling.



EMISSIONS Less idling reduces greenhouse gas emissions.



INJURIES Shorter crossing distances and lower speeds reduce injury-causing collisions.



LIVES Roundabouts decrease the likelihood of fatal collisions.

**We all share the Region's roads.
Let's get there safely together.**

SafeRoadsWR.com | #SafeRoadsWR

