

Region of Waterloo Children's Services

.....

Early Learning and Child Care Profiles 2018

Trends

This profile highlights a number of key indicators for Early Learning and Child Care (ELCC) in Waterloo Region and is a snapshot of programs and services in 2018. The year-over-year comparison can be used to identify trends and changes in the community and gain a better perspective on local opportunities to support planning for a community where all children thrive. Data included in this report refers to licensed child care and early learning programs for the period of January 1 to December 31 unless otherwise noted.

The total number of licensed ELCC spaces (age 0-4) **increased by 452 spaces (10%)** in 2018.



The Province of Ontario **increased funding** to the Region of Waterloo by more than **\$17 million** to support access and affordability of ELCC programming.



Following the Fee Reduction Pilot, as of July 1, 2018, the **average daily rate for child care was reduced by 15% for infants, 8% for toddlers, 7% for preschoolers.**



Waterloo Region child population

Child population ¹ (Census)	2011	2016	% change
0-4 years	24,730	24,195	-2.2%
0-12 years	73,845	76,190	+3.2%

Access and availability

Centre-based spaces	2016	2017	2018
Number of licensed ELCC centre sites (0–4 years) ²	138	146	148
Number of licensed ELCC centre spaces (0–4 years) ³	4,414	4,729	5,181
Percent of children (0–4 years) with access to a licensed ELCC centre-based space ⁴	18%	20%	21%
Licensed home child care	2016	2017	2018
Number of children (0-4) accessing home child care ⁵	1,020	1,052	946
Number of children (0-12) accessing home child care	1,700	1,671	1,479
Percent of children (0-4 years) with access to a child care space (including both licensed ELCC centre-based and licensed home child care spaces)	22%	24%	25%
Before and after school programs ⁶	2016	2017	2018
Percent of schools offering a before and after school program	93%	95%	95%
Number of children in school-board operated programs	4,001	4,430	5,141
Number of licensed before and after school spaces operated by community agencies ⁷	5,073	5,773	6,276
School-aged spaces at child care centres	2016	2017	2018
Number of school-aged spaces in licensed child care centres (non before and after school) ⁸	372	425	451
Total number of ELCC licensed spaces and school board operated before and after school program spaces in Waterloo Region	15,560	17,028	18,528
Child and family centres			2018
Number of EarlyON Child and Family Centre sites in Waterloo Region ⁹			33



Affordability

Cost of child care	2016	2017	2018
Cost to attend a licensed centre on a full-time basis for an infant for one year	\$14,000 to \$19,750	\$15,138 to \$21,814	\$13,050 to \$23,677
Average daily rates (2018 rates are with Fee Reduction Pilot applied)	2016	2017	2018¹⁰
Average daily rate for centre-based infant care	\$65.78	\$67.56	\$61.74
Average daily rate for centre-based toddler care	\$47.92	\$49.77	\$49.15
Average daily rate for centre-based preschool care	\$42.69	\$44.17	\$43.73
Child care subsidy	2016	2017	2018
Average number of children receiving child care subsidy per month	3,012	2,836	2,970
Percent of families receiving subsidy that are lone-parent families	77%	78%	76%
Percent of families receiving subsidy that are two-parent families	23%	22%	24%
Percent of families receiving subsidy with a net income of \$20,000 of less	48%	48%	46%

Responsiveness and inclusion

Special Needs Resourcing (SNR)	2016	2017	2018
Number of children in child care receiving SNR services ¹¹	n/a ¹²	1,258	1,215
Percent of families with children aged 0-4 years in licensed child care who agreed that their educators respond to their child's individual needs ¹³			97%
Culturally specific programs	2016	2017	2018
Number of French language centre-based child care spaces	158	158	174

Quality

Description	2016	2017	2018
Average Lowest wage for Registered Early Childhood Educators (RECE)	\$16.87	\$17.23	\$19.71
Median wage for RECEs			\$20.46
Percent of families with children aged 0-4 years in licensed child care who agreed that licensed child care had a positive impact on their family's life ¹³			94%

Funding

Description	2016	2017	2018
Children's Services Annual Budget	\$49.5 M	\$57 M	\$75 M

Access and Availability

Increasing access to quality, licensed early years and child care programs and services is a priority for Waterloo Region. By the end of 2018, there was a total of 5,181 licensed centre-based child care spaces (0-4 years) in Waterloo Region.

Centre-based ELCC programs are operated in a variety of locations including stand-alone buildings, workplaces, community centres, schools and places of worship. Centre-based ELCC is available for children up to 12 years of age.

Home-based ELCC is provided in approved private homes by caregivers who have a contract with one of four licensed home child care agencies in Waterloo Region. Home-based ELCC is available for children up to 12 years old and can be available seven days a week, 24 hours a day.

0-4 year olds

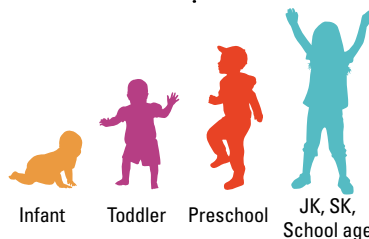
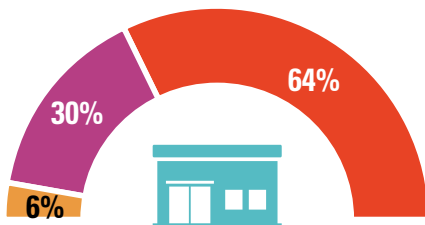
As of December 31, 2018 there were **5,181 spaces for children 0 to 4 years of age**, an **increase of 452 spaces (10%)** from the same time in 2017. By comparison, the centre-based child care spaces across Ontario for the same age group have increased by just 3% between 2017 and 2018.¹⁴

452 new centre-based spaces for children 0-4

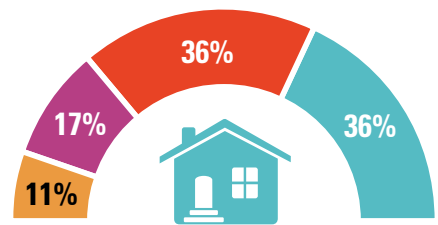


As of December 31, 2018, there were approximately **401 home child care caregivers**, providing care to **1,479 children** in Waterloo Region.

Distribution of licensed centre-based 0-4 year old spaces by age-group



Age distribution of children in the Region's directly operated home child care, 2018



Kindergarten and school age children

As of December 31, 2018 there were **451 spaces for 4-12 year old children** in centre-based care. These are in addition to before and after school spaces.



Before and after school programs

are available for children 4 to 12 years of age. These programs can be operated directly by the school boards or by a licensed child care operator. Before and after school programs operated by the school boards had 5,141 children registered for the 2018/19 School Year. In addition, licensed community ELCC agencies provided before and after school care for 6,276 children.

For the 2018/19 school year, **95% of schools** serving children 4-12 years of age offered before and after school programs.



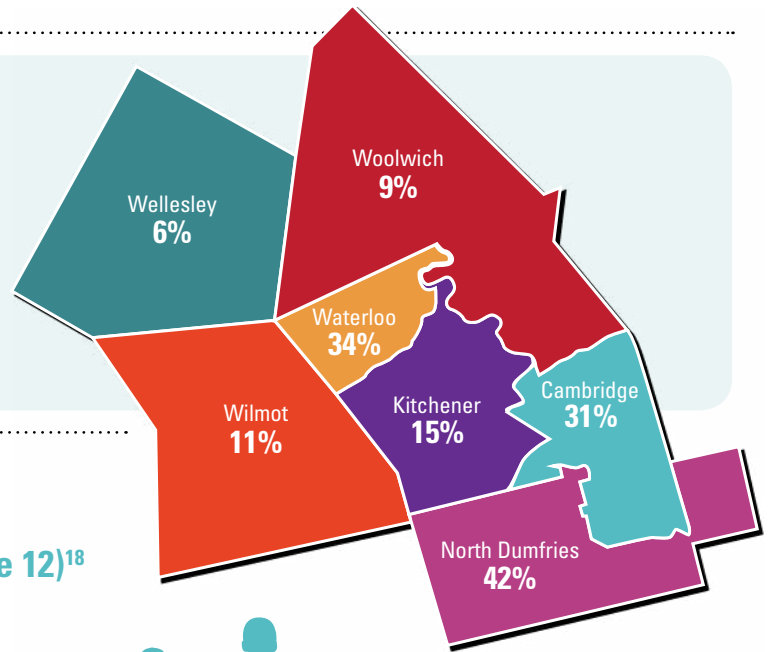
Access to licensed child care

Number of ELCC centre-based spaces in Waterloo Region

- 319** infant spaces (0–18 months)
- 1,530** toddler spaces (18–30 months)
- 3,332** preschool spaces (2.5–4 years)

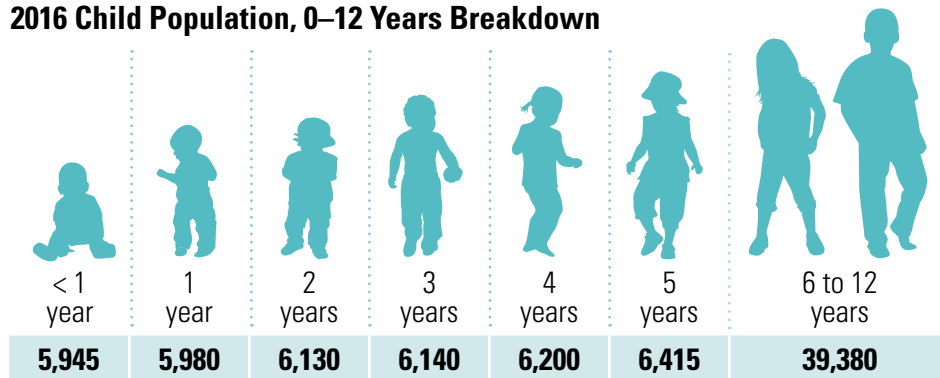
Approximately one in four children (25%) between 0 and 4 years old in Waterloo Region have access to a licensed child care space.¹⁵ Research indicates that demand is much higher. The current Provincial target is to support access across the Ontario for about 40% of children 0-4 years old.¹⁶

Percentage of children (birth to 4 years) with access to a licensed centre-based space by municipality.¹⁷



Number of children in Waterloo Region (birth to age 12)¹⁸

2016 Child Population, 0–12 Years Breakdown



At the time of the 2016 Census, there were a total of **24,195** children 0-4 years of age and **76,190** children 0 to 12 years of age living in Waterloo Region.

Child and Family Centres offer free, drop-in programs for children from birth to 6 years of age, their parents and caring adults. Child and Family Centres are places where families can engage in play-based learning activities, get advice from early childhood professionals, find out about other services, and connect with other families. In Waterloo Region, the YMCAs of Cambridge & Kitchener-Waterloo are the lead agency for the delivery of EarlyON Child and Family Centres and in 2019, Anishnabeg Outreach will open the first Indigenous-led and supported Child and Family Centre in Waterloo Region.¹⁹



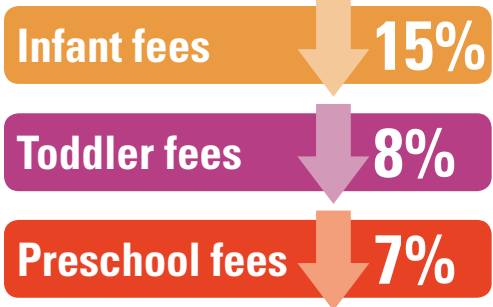
At the end of 2018, there were 33 EarlyON Child and Family Centre sites operating, including 5 locations that are open at least 5 days per week.

Affordability

Access to child care and affordability are linked. High quality, licensed ELCC comes at a significant financial cost to families which prevents many families from even trying to find licensed care. The Region has invested in programs so that more infants, toddlers and preschoolers have access to child care spaces. This includes funding \$20.2 million for Child Care Fee Subsidy. In addition, the Fee Reduction Pilot resulted in reduced fees for families in participating programs. With the Fee Reduction Pilot, median rates in Waterloo Region were below the 2018 median daily rates across Ontario.

Fee Reduction Pilot

90% of child care programs participated in the Fee Reduction Pilot, which allowed participating programs to reduce their full-time fees by \$12 for Infant spaces, \$5 for Toddler spaces and \$4 for Preschool Spaces. The Fee Reduction Pilot began as of July 1, 2018. As a result of the Fee Reduction Pilot, overall, the average full-time daily rate for centre-based child care was reduced by:



Child care type

Licensed centre-based care

- Infant (birth to 18 months)
- Toddler (18 to 30 months)
- Preschool (2.5 to 4 years)

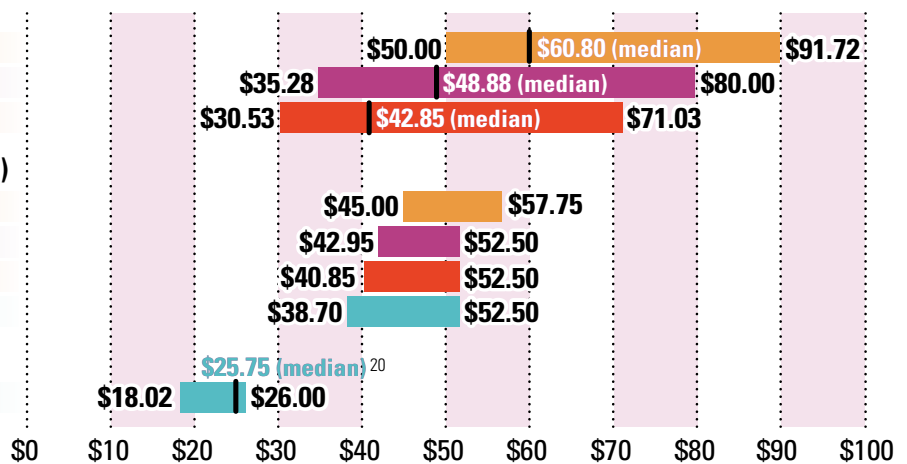
Licensed home-based care (8 hours)

- Infant
- Toddler
- Preschool
- School age (4 to 7 years)

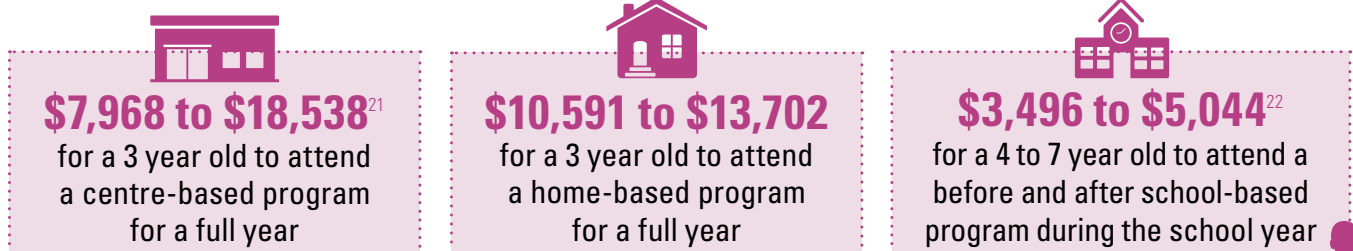
School-based before and after care

- Before and after school

Range of parent fees for full day care, per day



Cost to attend licensed care on a full-time basis



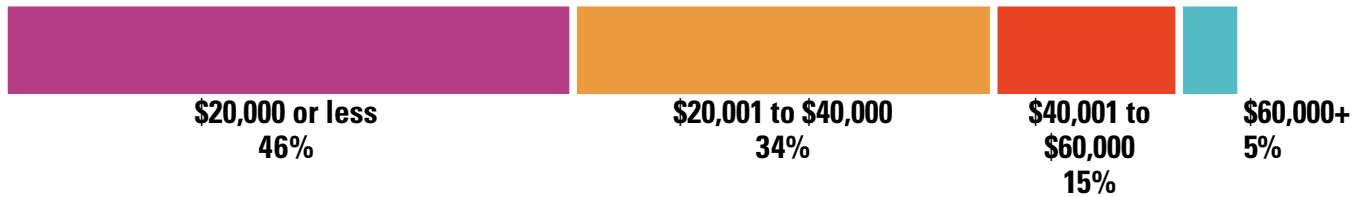
The cost for one child to attend full-time licensed child care from ages 1 to 12 is between **\$68,036 and \$117,679**.²³



Child Care Fee Subsidy

Child Care Fee Subsidy provides financial assistance to eligible families to help pay for child care costs. The level of assistance is based on the family's income.

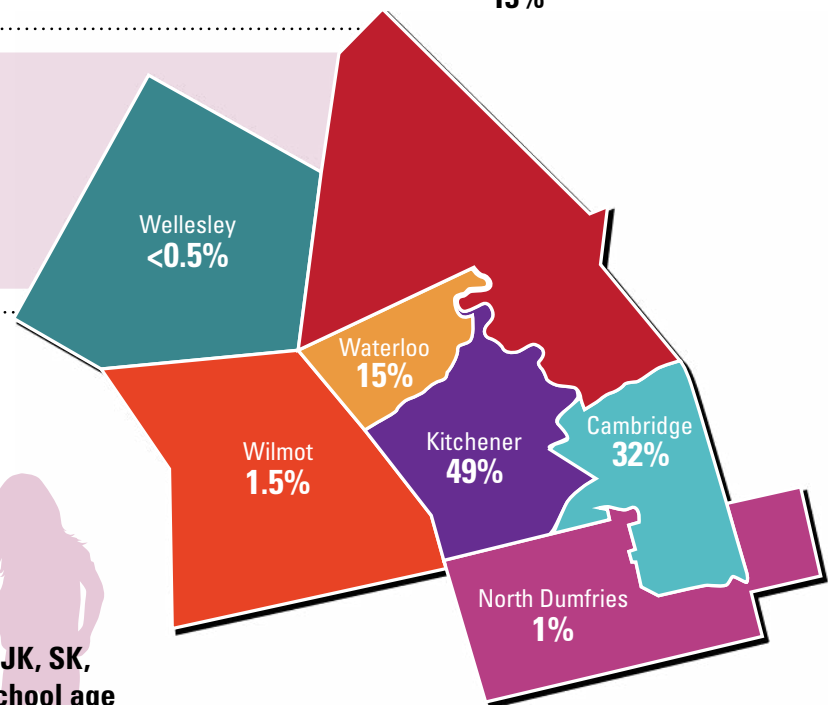
Income distribution of families on the Child Care Fee Subsidy caseload



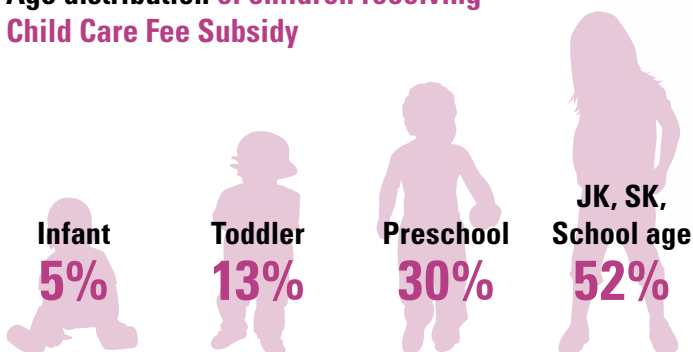
Reasons families receiving subsidy are using child care



Distribution of Child Care Fee Subsidy by municipality in 2018



Age distribution of children receiving Child Care Fee Subsidy



*Parent Medical, Seeking Employment, etc

Responsiveness and Inclusion

Children are unique and grow and learn in different ways. All children have the right to fully participate in a quality licensed ELCC program that respects and supports inclusion and meaningful participation. Inclusion involves being responsive to the needs of children and families by providing a range of programs that are culturally appropriate, located in schools, communities, workplaces and home settings so that parents can choose the options that work best for their family. 97% of respondents to the 2018 Child Care Survey agreed that their educators respond to their child's individual needs.

OneList Waterloo Region: One connection. One application

OneList is the online service where all applications for licensed child care in Waterloo Region are submitted. OneList can also be used to apply for financial help to pay for child care and to apply for special needs supports. www.OneListWaterlooRegion.ca



3,655

Average number of new
OneList applications
per month

4,981

Number of children
registered with OneList
in 2018²⁴

Special needs supports

The Special Needs Resourcing Collaborative works together with licensed child care programs to support all children to fully participate. Support may be focused on one child, a small group, or the whole classroom or home.

In 2018, the main services provided by Special Needs Resourcing agencies to promote inclusion included:

- Capacity building and training for child care staff
- Individual assessments and plans (e.g., speech and language, occupational therapy, physiotherapy)
- Feedback and support to families
- Additional staffing for child care programs



1,215

Total number of children served with special needs supports

41,780

Total hours of enhanced classroom support in 2018

Culturally responsive programming

Availability of a variety of culturally inclusive programming is a priority in Waterloo Region.

French language licensed child care spaces were expanded in 2018. There are now 174 French language spaces available in Waterloo Region, up 10% from 2017.

In 2018, the Region of Waterloo funded Anishnabeg Outreach to open the first Indigenous-led Child and Family Centre in Waterloo Region. The centre will open in 2019.

174

French Language spaces in Waterloo Region



The Region funded Anishnabeg Outreach to open the first Indigenous-led Child and Family Centre in Waterloo Region.

Quality

Responsibility for ensuring quality ELCC programs is shared across the child care and early learning sector. Locally, the Region, as Consolidated Municipal Service Manager, ELCC programs, and Conestoga College Professional Resource Centre partner together to support quality in child care and early learning programs.



Early Years
Engage

Continuous quality improvement
in Waterloo Region

Continuous quality improvement

Continuous learning and growth is important – for children and for Early Years partners. Early Years Engage is the Region’s continuous quality improvement program. Early Years Engage helps child care and early learning programs take an ongoing approach to improving.

Our vision for quality in Waterloo Region:

Quality is a shared responsibility and supported through a system of relationships, including the relationships between educators, children and their parents; among professionals within organizations; and between the system and its service partners throughout the community.

94%

of parent/caregivers agreed with the statement: “the program my child is in has had a positive impact on my family’s day-to-day life”²⁵

Wages for Registered Early Childhood Educators

The wages paid to Registered Early Childhood Educators (RECEs) have an impact on the quality of both individual programs and the overall ELCC system.²⁶

Hourly wages for licensed child care centre staff²⁷

Position	Lowest	Highest	Median
RECE	\$14.00	\$40.53	\$20.46
Supervisor	\$14.00	\$53.69	\$29.04
Non-RECE program staff	\$14.00	\$26.84	\$17.06
Cook	\$14.00	\$30.25	\$17.08



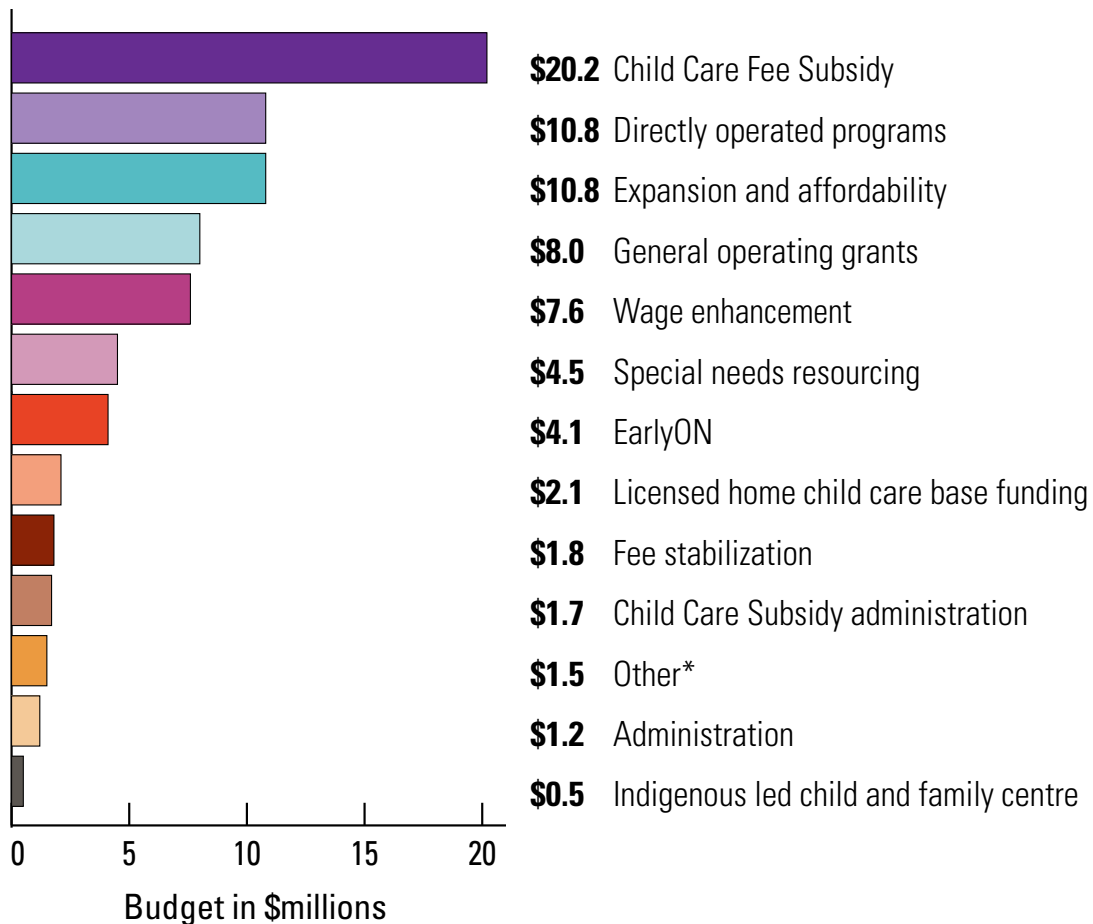
Funding

As the Consolidated Municipal Service Manager, the Region of Waterloo, Children's Services has the responsibility for service and system management for licensed ELCC for children from birth to 12 years of age.

The Region of Waterloo, Children's Services total budget allocation was **\$74.8 million** in 2018.



Children's Services budget, 2018 (in \$millions)



*Other = Community Based Capital, Children and Youth Planning Table, Pay Equity, Capacity Building, Repairs and Maintenance.

- ¹ Statistics Canada Census, 2011; 2016. Note that 0-4 years and 0-12 years refers to children up to, but not including, their fourth birthday and twelfth birthday respectively.
- ² Region of Waterloo, Children's Services. Licensed Spaces. December 31, 2016, 2017, 2018. Figures include licensed community operated before and after school programs.
- ³ Region of Waterloo, Children's Services. Licensed Spaces. December 31, 2016; 2017; 2018.
- ⁴ Calculated using the number of licensed spaces (0-4 years) and total population (0-4 years) from the 2016 census.
- ⁵ Region of Waterloo, Children's Services. 2018 Operating Funding applications.
- ⁶ Data reported for the school year. For example, 2018 represents the 2018-2019 school year.
- ⁷ School-age school-based spaces operated by community agencies. Note that about 50% of these spaces are converted to summer camps spaces during the summer months.
- ⁸ These are JK/SK and school age programs offered in a child care centre. Includes summer camps and programs offered throughout the school year
- ⁹ Child and Family Centres were formerly called "Ontario Early Years Centres". EarlyON is now included in this profile because program funding and oversight is a responsibility of the Region of Waterloo as of 2018. This includes main sites and mobile sites.
- ¹⁰ Average daily rates in 2018 were reduced as part of the Fee Reduction Pilot.
- ¹¹ Children served includes children referred that year, as well as those carried over from past years. This figure is unique children whereas past ELCC Profiles did include duplicated children.
- ¹² 2016 SNR figures include duplicated children served. Because the figure is not comparable with 2017 and 2018, it is not included in this profile.
- ¹³ 2018 Child Care Survey results: https://www.regionofwaterloo.ca/en/living-here/resources/Documents/Childrens-Services-/DOCS_ADMIN-2907172-v1-2-pager_2018_Parent_survey_summary_-_AODA_Compliant_.pdf
- ¹⁴ Ministry of Education. Early Years and Child Care Annual Report 2018. <http://www.edu.gov.on.ca/childcare/EarlyYearsChildCareAnnualReport2018.pdf>
- ¹⁵ Region wide access to licensed centre-based child care for ages 0-4 years is 21%.
- ¹⁶ Ministry of Education, Backgrounder: Affordable, Accessible, Quality Child Care for More Families. September 12, 2016. Available at: <https://news.ontario.ca/opo/en/2016/09/affordable-accessible-quality-child-care-for-more-families.html>
- ¹⁷ This figure does not include home child care spaces.
- ¹⁸ Statistics Canada - Census, 2016.
- ¹⁹ Visit <http://www.earlyyearsinfo.ca/> for EarlyON information and <http://aocan.org/about-family-centre.html> for Indigenous led Child and Family Centre information.
- ²⁰ Before and after school care includes school board and community operated in school programs. Fees are not included for programs operating in French and French Catholic Schools.
- ²¹ Full year based on 261 paid days (365 days less 104 weekend days).
- ²² School year based on 194 school days (no non-instruction days included).
- ²³ Calculation based on 2018 daily rates, with fee reduction applied, for centre-based licensed care for ages 0-4, plus before and after school for ages 4-12; and 8 weeks of full-day home child care for ages 4-12.
- ²⁴ OneList Application Data (January 1 to December 31, 2018), OneHSN.
- ²⁵ From the results of the 2018 Region-wide survey to parents and caregivers of children 0-4 in licensed child care: https://www.regionofwaterloo.ca/en/living-here/resources/Documents/Childrens-Services-/DOCS_ADMIN-2907172-v1-2-pager_2018_Parent_survey_summary_-_AODA_Compliant_.pdf
- ²⁶ Because of inadequate wages, some staff may leave the ELCC Sector (Growing Together: Ontario's Early Years and Child Care Workforce Strategy, 2018. <http://www.edu.gov.on.ca/childcare/growing-together-eycc-workforce-en.pdf>.)
- ²⁷ Figures from the 2018 Salary Survey of all Licensed Child Care programs in Waterloo Region, including full-day and half-day licensed centre-based staff. In 2018, the minimum wage in Ontario increased from \$11.60 per hour to \$14.00 per hour. Hourly rates reported do not include Wage Enhancement.



Region of Waterloo

COMMUNITY SERVICES

Region of Waterloo, Children's Services

99 Regina Street South, 5th Floor
Waterloo, Ontario, N2J 4G6
519-575-4400
DataWR@regionofwaterloo.ca

To request an alternate format of this document,
call 519-575-4400 or TTY: 519-575-4608.

June, 2019

www.regionofwaterloo.ca/childrensservices