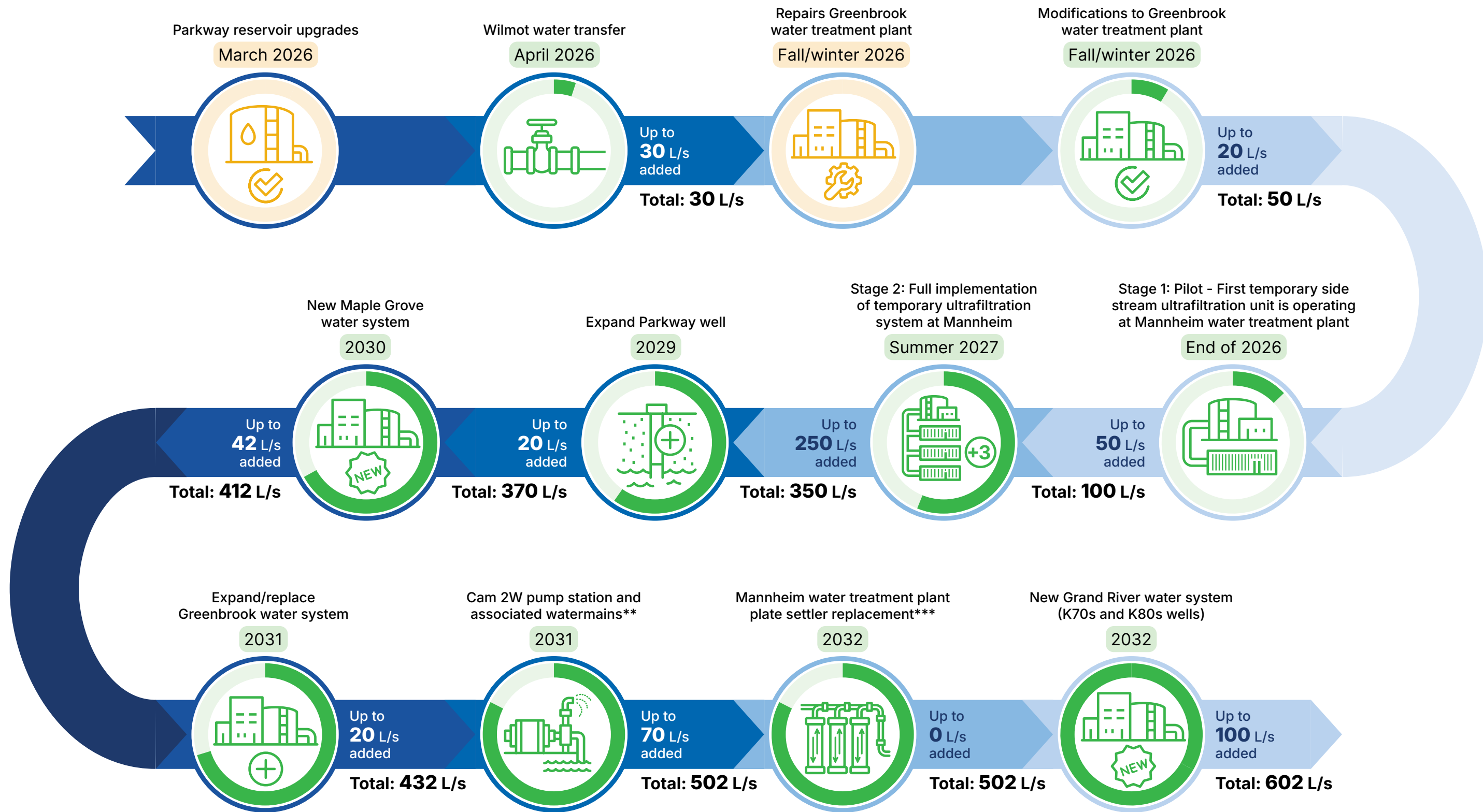


Solutions to the water capacity constraint: A timeline

The Region is working concurrently on several short-, medium-, and long-term solutions to fully restore sustainable operations and support growth in the Mannheim Service Area. This timeline will evolve as more information is available and projects advance. While this work is underway, we continue looking at all options to ensure a sustainable water supply for generations to come.

- Repairs/renewal work
- New capacity in litres per second
(1 L/s = water for up to 351 people)



* If the side stream treatment pilot (stage 1) is successful, new capacity will increase up to 250 L/s in stage 2.

**Any gain in supply from the Cam 2W Pump Station is not new water supply for the Integrated Urban System; it is a transfer from the Middleton Service Area to the Mannheim Service Area.

***Mannheim Water Treatment Plant Side Stream Treatment is temporary until the long-term solution is put in place through replacement of the plate settlers.