



Notice of Addendum

Maple Grove Water System Class EA Addendum Municipal Class Environmental Assessment Study Addendum Region of Waterloo

The Study:

The Region of Waterloo (ROW) issued the Environmental Study Report (ESR) for the Water Supply Study for the Fountain Street and Maple Grove Area Class Environmental Assessment (2014 EA) on March 28, 2014. The ESR recommended a new water treatment plant be constructed on Regional property at 200 Maple Grove Road in Cambridge, supplied by two municipal wells. At that time, the water treatment plant was not constructed, and the study's subject wells (Wells P16 and P18) were not put into service as production wells as part of the ROW's water supply network.

In 2024, the ROW initiated an addendum to the 2014 EA to reconfirm findings and update the preferred concept.

The Process:

The addendum was completed in accordance with Schedule "C" requirements as outlined in the Municipal Engineers Association "*Municipal Class Environmental Assessment*," (2024). This is an approved process under the Ontario *Environmental Assessment Act*. The Class EA addendum process includes an evaluation of conditions to identify changes since the completion of the 2014 EA, an assessment of potential impacts associated with the proposed improvements, and development of measures to mitigate identified impacts.

The Addendum Report:

The Addendum Report, prepared by MTE Consultants, will be available on the ROW webpage: <https://www.regionofwaterloo.ca/maple-grove-water-system> as of May 29, 2026.

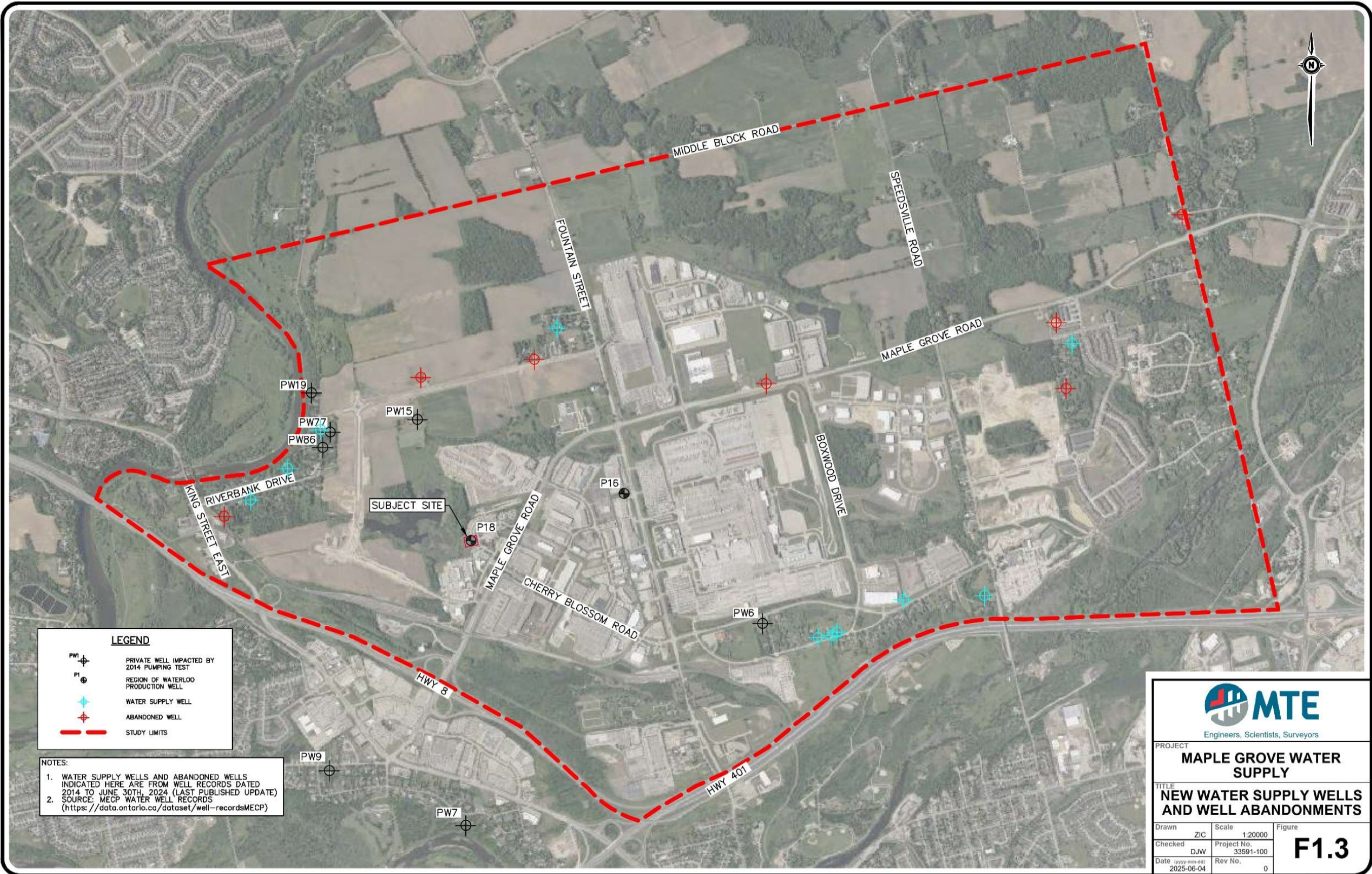
MTE Consultants and the ROW invite you to view the Addendum Report and provide your comments by June 28, 2026, to the following:

MTE Consultants Inc.
Dave Wilhelm, P.Eng.
Director, Water/Wastewater
T: 519-743-6500
dwilhelm@mte85.com

and

Regional Municipality of Waterloo
Bram Bontje P.Eng.
Engineering & Planning
T: 226-678-7056
bbontje@regionofwaterloo.ca

Date of Notice: May 29, 2026



LEGEND

- PRIVATE WELL IMPACTED BY 2014 PUMPING TEST
- REGION OF WATERLOO PRODUCTION WELL
- WATER SUPPLY WELL
- ABANDONED WELL
- STUDY LIMITS

NOTES:

1. WATER SUPPLY WELLS AND ABANDONED WELLS INDICATED HERE ARE FROM WELL RECORDS DATED 2014 TO JUNE 30TH, 2024 (LAST PUBLISHED UPDATE)
2. SOURCE: MECP WATER WELL RECORDS (<https://data.ontario.ca/dataset/well-recordsMECP>)

MTE
Engineers, Scientists, Surveyors

PROJECT
MAPLE GROVE WATER SUPPLY

TITLE
NEW WATER SUPPLY WELLS AND WELL ABANDONMENTS

Drawn	ZIC	Scale	1:20000	Figure	F1.3
Checked	DJW	Project No.	33591-100		
Date	2025-06-04	Rev No.	0		